

Recombinant Human LYPD3 Protein, C-His (Active)

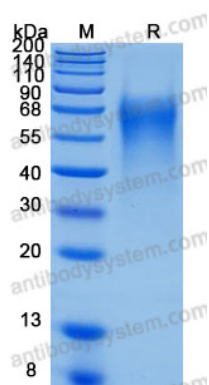
Summary

| | |
|------------------------------|---|
| Catalog No. | AHB60001 |
| Alternative Names | C4.4A, Matrigel-induced gene C4 protein, GPI-anchored metastasis-associated protein C4.4A homolog, MIG-C4, LYPD3, Ly6/PLAUR domain-containing protein 3 |
| Form | Lyophilized |
| Storage buffer | Lyophilized from a solution in PBS pH 7.4, 5% Trehalose, 5% Mannitol. |
| Purity | >90% as determined by SDS-PAGE. |
| Applications | Bioactivity, ELISA, Immunogen, SDS-PAGE, WB |
| Biological activity | Measured by its binding ability in a functional ELISA. When rhLYPD3 (Cat #: AHB60001) is immobilized at 0.5 µg/mL (100 µL/well), rhGalectin-3 binds with an apparent KD <80 nM. |
| Endotoxin level | <0.1 EU/µg of the protein by the LAL method. |
| Expression system | Mammalian Cells |
| Accession | O95274 |
| Protein length | Leu31-His286 |
| Nature | Recombinant |
| Stability and Storage | Use a manual defrost freezer and avoid repeated freeze thaw cycles. Store at 2 to 8°C for one week. Store at -20 to -80°C for twelve months from the date of receipt. |
| Reconstitution | Reconstitute in sterile water for a stock solution. A copy of datasheet will be provided with the products, please refer to it for details. |

Recombinant Proteins & Antibodies

| | |
|-----------------|--|
| Species | Homo sapiens (Human) |
| Shipping | In general, proteins are provided as lyophilized powder/frozen liquid. They are shipped out with dry ice/blue ice unless customers require otherwise. |
| Note | For research use only. |

Data Image



SDS-PAGE

SDS-PAGE for Recombinant Human LYPD3 protein