

# Recombinant Human CREG1 Protein, C-His (Active)

## Summary

---

<b>Catalog No.</b>	AHB27101
<b>Alternative Names</b>	Cellular repressor of E1A-stimulated genes 1, Protein CREG1, CREG1, CREG
<b>Form</b>	Lyophilized
<b>Storage buffer</b>	Lyophilized from a solution in PBS pH 7.4, 5% Trehalose, 5% Mannitol.
<b>Purity</b>	>90% as determined by SDS-PAGE.
<b>Applications</b>	Bioactivity, ELISA, Immunogen, SDS-PAGE, WB
<b>Biological activity</b>	Measured by its binding ability in a functional ELISA. When rhIGF-II R is immobilized at 2 µg/mL (100 µL/well), the concentration of rhCREG (Cat #: AHB27101) that produces 50% of the optimal binding response is found to be approximately 2-10 ng/mL.
<b>Endotoxin level</b>	<0.1 EU/µg of the protein by the LAL method.
<b>Expression system</b>	Mammalian Cells
<b>Accession</b>	O75629
<b>Protein length</b>	Met1-Gln220
<b>Nature</b>	Recombinant
<b>Stability and Storage</b>	Use a manual defrost freezer and avoid repeated freeze thaw cycles. Store at 2 to 8°C for one week. Store at -20 to -80°C for twelve months from the date of receipt.
<b>Reconstitution</b>	Reconstitute in sterile water for a stock solution. A copy of datasheet will be provided with the products, please refer to it for details.
<b>Species</b>	Homo sapiens (Human)

**Shipping**

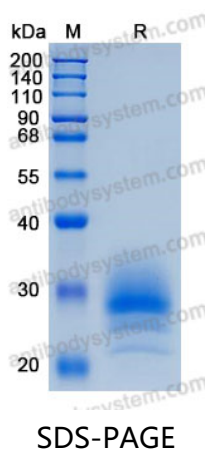
In general, proteins are provided as lyophilized powder/frozen liquid. They are shipped out with dry ice/blue ice unless customers require otherwise.

**Note**

For research use only.

**Data Image**

---



SDS-PAGE for Recombinant Human CREG1/CREG protein