

Recombinant Human CD327/SIGLEC6 Protein, C-His (Active)

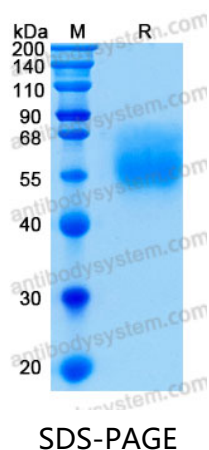
Summary

Catalog No.	AHA75301
Alternative Names	SIGLEC6, CD33L1, CD327, CD33L, Siglec-6, CDw327, CD33 antigen-like 1, OBBP1, Obesity-binding protein 1, Sialic acid-binding Ig-like lectin 6, OB-BP1
Form	Lyophilized
Storage buffer	Lyophilized from a solution in PBS pH 7.4, 5% Trehalose, 5% Mannitol.
Purity	>90% as determined by SDS-PAGE.
Applications	Bioactivity, ELISA, Immunogen, SDS-PAGE, WB
Biological activity	Measured by its ability to bind biotinylated Neu5Ac alpha 2-6GalNAc alpha (sialyl-Tn).
Endotoxin level	<0.1 EU/μg of the protein by the LAL method.
Expression system	Mammalian Cells
Accession	O43699
Protein length	Gln27-Ser331
Nature	Recombinant
Stability and Storage	Use a manual defrost freezer and avoid repeated freeze thaw cycles. Store at 2 to 8°C for one week. Store at -20 to -80°C for twelve months from the date of receipt.
Reconstitution	Reconstitute in sterile water for a stock solution. A copy of datasheet will be provided with the products, please refer to it for details.

Recombinant Proteins & Antibodies

Species	Homo sapiens (Human)
Shipping	In general, proteins are provided as lyophilized powder/frozen liquid. They are shipped out with dry ice/blue ice unless customers require otherwise.
Note	For research use only.

Data Image



SDS-PAGE for Recombinant Human SIGLEC6 protein