

Recombinant Mouse Chil3 Protein, C-His (Active)

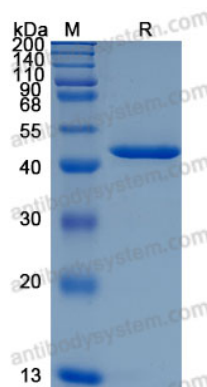
Summary

Catalog No.	AMN56601
Alternative Names	Chitinase-like protein 3, Beta-N-acetylhexosaminidase Ym1, Chitinase-3-like protein 3, ECF-L, Eosinophil chemotactic cytokine, Secreted protein Ym1, Chil3, Chi3l3, Ym1
Form	Lyophilized
Storage buffer	Lyophilized from a solution in PBS pH 7.4, 5% Trehalose, 5% Mannitol.
Purity	>90% as determined by SDS-PAGE.
Applications	Bioactivity, ELISA, Immunogen, SDS-PAGE, WB
Biological activity	Measured by the ability of the immobilized protein to support the adhesion of human squamous cell carcinoma cells (FaDu). When 5×10^4 cells/well are added to recombinant Mouse Chil3/Ym1 (Cat #: AMN56601) coated plates, cell adhesion is enhanced in a dose dependent manner after 1 hour incubation at 37 °C. The ED50 for this effect is 0.3-1.2 µg/mL.
Endotoxin level	<0.1 EU/µg of the protein by the LAL method.
Expression system	Mammalian Cells
Accession	O35744
Protein length	Met1-Tyr398
Nature	Recombinant
Stability and Storage	Use a manual defrost freezer and avoid repeated freeze thaw cycles. Store at 2 to 8°C for one week. Store at -20 to -80°C for twelve months from the date of receipt.

Recombinant Proteins & Antibodies

Reconstitution	Reconstitute in sterile water for a stock solution. A copy of datasheet will be provided with the products, please refer to it for details.
Species	Mus musculus (Mouse)
Shipping	In general, proteins are provided as lyophilized powder/frozen liquid. They are shipped out with dry ice/blue ice unless customers require otherwise.
Note	For research use only.

Data Image



SDS-PAGE

SDS-PAGE for Recombinant Mouse YM1/Chitinase
3-like 3 protein