

# Recombinant Human GFRA2 Protein, C-His (Active)

## Summary

---

<b>Catalog No.</b>	AHA12001
<b>Alternative Names</b>	TGF-beta-related neurotrophic factor receptor 2, RETL2, GDNFR-alpha-2, GFRA2, GFR-alpha-2, Neurturin receptor alpha, TRNR2, GDNF receptor beta, GDNF family receptor alpha-2, NRTNR-alpha, RET ligand 2, NTNRA, GDNFRB, GDNF receptor alpha-2, GDNFR-beta
<b>Form</b>	Lyophilized
<b>Storage buffer</b>	Lyophilized from a solution in PBS pH 7.4, 5% Trehalose, 5% Mannitol.
<b>Purity</b>	>90% as determined by SDS-PAGE.
<b>Applications</b>	Bioactivity, ELISA, Immunogen, SDS-PAGE, WB
<b>Biological activity</b>	Immobilized recombinant human Neurturin at 5 µg/mL (100 µL/well) can bind recombinant human GFRA2 (Cat #: AHA12001), the EC50 of human GFRA2 is 1.82 µg/mL.
<b>Endotoxin level</b>	<0.1 EU/µg of the protein by the LAL method.
<b>Expression system</b>	Mammalian Cells
<b>Accession</b>	O00451
<b>Protein length</b>	Ser22-Ser441
<b>Nature</b>	Recombinant
<b>Stability and Storage</b>	Use a manual defrost freezer and avoid repeated freeze thaw cycles. Store at 2 to 8°C for one week. Store at -20 to -80°C for twelve months from the date of receipt.
<b>Reconstitution</b>	Reconstitute in sterile water for a stock solution. A copy of datasheet will be provided with the products, please refer to it for details.

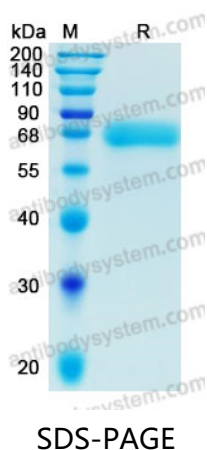
---

Recombinant Proteins & Antibodies

<b>Species</b>	Homo sapiens (Human)
<b>Shipping</b>	In general, proteins are provided as lyophilized powder/frozen liquid. They are shipped out with dry ice/blue ice unless customers require otherwise.
<b>Note</b>	For research use only.

## Data Image

---



SDS-PAGE for Recombinant Human GDNF Receptor  
alpha 2/GFRA2 protein