

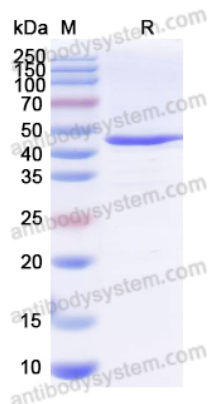
# CU43 Protease (Human IgG Specific)

## Summary

---

<b>Catalog No.</b>	YXX25001
<b>Alternative Names</b>	CU43 Protease, CU43
<b>Form</b>	Liquid
<b>Storage buffer</b>	0.01M PBS, pH 7.4, 50% Glycerol
<b>Concentration</b>	0.75 mg/ml
<b>Purity</b>	>90% as determined by SDS-PAGE.
<b>Applications</b>	Proteomics
<b>Endotoxin level</b>	Please contact with the lab for this information.
<b>Expression system</b>	E. coli
<b>Protein length</b>	CU43 Protease is cloned from <i>Corynebacterium ulcerans</i> and expressed in E. coli.
<b>Nature</b>	Recombinant
<b>Predicted molecular weight</b>	44.89 kDa
<b>Stability and Storage</b>	Use a manual defrost freezer and avoid repeated freeze thaw cycles. Store at 2 to 8°C for one week. Store at -20°C for twelve months from the date of receipt.
<b>Species</b>	<i>Corynebacterium ulcerans</i>
<b>Shipping</b>	In general, proteins are provided as lyophilized powder/frozen liquid. They are shipped out with dry ice/blue ice unless customers require otherwise.
<b>Note</b>	For research use only.

## Data Image



SDS-PAGE

SDS-PAGE for CU43 Protease



Experiment Example

Lane1 : Before cleavage

Lane2 : After cleavage

Human IgG1 Fc protein was cleaved by CU43

Protease at 4°C for 16 h