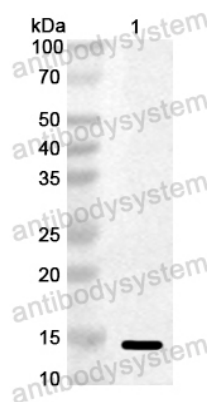


Anti-Vibrio cholerae serotype O1 ctxB/Cholera Toxin Subunit B Polyclonal Antibody

Summary

Catalog No.	PXX05801
Host species	Rabbit
Species reactivity	Vibrio cholerae serotype O1 (strain ATCC 39315 / El Tor Inaba N16961)
Immunogen	E. coli - derived recombinant Vibrio cholerae serotype O1 ctxB/Cholera Toxin Subunit B (Thr22-Asn124).
Form	Liquid
Storage buffer	0.01M PBS, pH 7.4, 50% Glycerol, 0.05% Proclin 300.
Clonality	Polyclonal
Isotype	IgG
Applications	ELISA, IHC, WB
Target	Cholera enterotoxin subunit B, Cholera enterotoxin B chain, Cholera enterotoxin gamma chain, Choleragenoid, ctxB, toxB, VC_1456
Purification	Antigen affinity purification.
Accession	P01556
Stability and Storage	Use a manual defrost freezer and avoid repeated freeze thaw cycles. Store at 4°C for frequent use. Store at -20 to -80°C for twelve months from the date of receipt.
Note	For research use only.

Data Image



Western Blot

Recombinant Protein lysates were subjected to SDS PAGE followed by western blot with ctxB/Cholera Toxin Subunit B antibody (PXX05801) at 1 μ g/ml.

Lane 1: Recombinant protein

Second Ab: Goat Anti-Rabbit IgG H&L Polyclonal antibody, HRP (PTB96431) at 0.1 μ g/mL.

Predict MW: 14 kDa

Observed MW: 14 kDa