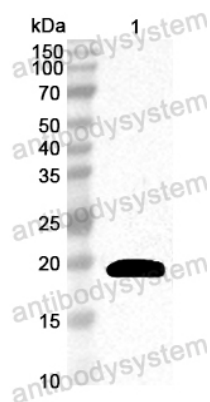


Anti-Soybean Gly m 4/PR-10 Polyclonal Antibody

Summary

Catalog No.	PZZ04101
Host species	Rabbit
Species reactivity	Glycine max (Soybean) (Glycine hispida)
Immunogen	E. coli - derived recombinant Soybean Gly m 4/PR-10 (Met1-Asn158).
Form	Liquid
Storage buffer	0.01M PBS, pH 7.4, 50% Glycerol, 0.05% Proclin 300.
Concentration	2.51 mg/ml
Clonality	Polyclonal
Isotype	IgG
Applications	ELISA, IHC, WB
Target	Stress-induced protein SAM22, Pathogenesis-related protein 10, Starvation-associated message 22, Gly m 4, PR-10, GLYMA_07G243500
Purification	Antigen affinity purification.
Accession	P26987
Stability and Storage	Use a manual defrost freezer and avoid repeated freeze thaw cycles. Store at 4°C for frequent use. Store at -20 to -80°C for twelve months from the date of receipt.
Note	For research use only.

Data Image



Western Blot

Recombinant Protein lysates were subjected to SDS PAGE followed by western blot with Gly m 4/PR-10 antibody (PZZ04101) at 1 μ g/ml.

Lane 1: Recombinant protein

Second Ab: Goat Anti-Rabbit IgG H&L Polyclonal antibody, HRP (PTB96431) at 0.1 μ g/mL.

Predict MW: 19 kDa

Observed MW: 19 kDa