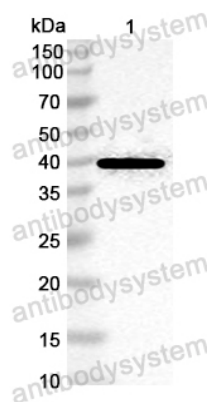


Anti-Perennial ryegrass Lol p 2/LolPII Polyclonal Antibody

Summary

Catalog No.	PZZ02601
Host species	Rabbit
Species reactivity	Lolium perenne (Perennial ryegrass)
Immunogen	E. coli - derived recombinant Perennial ryegrass Lol p 2/LolPII (Ala1-Glu97).
Form	Liquid
Storage buffer	0.01M PBS, pH 7.4, 50% Glycerol, 0.05% Proclin 300.
Clonality	Polyclonal
Isotype	IgG
Applications	ELISA, IHC, WB
Target	Pollen allergen Lol p 2-A, Allergen Lol p II-A, Lol p 2-A
Purification	Antigen affinity purification.
Accession	P14947
Stability and Storage	Use a manual defrost freezer and avoid repeated freeze thaw cycles. Store at 4°C for frequent use. Store at -20 to -80°C for twelve months from the date of receipt.
Note	For research use only.

Data Image



Western Blot

Recombinant Protein lysates were subjected to SDS PAGE followed by western blot with Lol p 2/LolPII antibody (PZZ02601) at 1 µg/ml.

Lane 1: Recombinant protein

Second Ab: Goat Anti-Rabbit IgG H&L Polyclonal antibody, HRP (PTB96431) at 0.1 µg/mL.

Predict MW: 39 kDa

Observed MW: 39 kDa