

# Anti-German cockroach Bla g 2/Allergen Bla g II Polyclonal Antibody

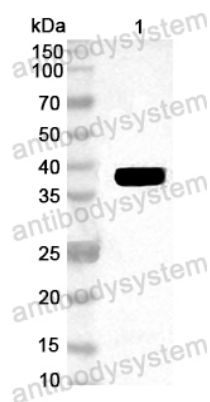
## Summary

---

<b>Catalog No.</b>	PWK33401
<b>Host species</b>	Rabbit
<b>Species reactivity</b>	Blattella germanica (German cockroach) (Blatta germanica)
<b>Immunogen</b>	E. coli - derived recombinant German cockroach Bla g 2/Allergen Bla g II (Leu30-Val352).
<b>Form</b>	Liquid
<b>Storage buffer</b>	0.01M PBS, pH 7.4, 50% Glycerol, 0.05% Proclin 300.
<b>Clonality</b>	Polyclonal
<b>Isotype</b>	IgG
<b>Applications</b>	ELISA, IHC, WB
<b>Target</b>	Aspartic protease Bla g 2, 3.4.23.-, Allergen Bla g II, Bla g 2
<b>Purification</b>	Antigen affinity purification.
<b>Accession</b>	P54958
<b>Stability and Storage</b>	Use a manual defrost freezer and avoid repeated freeze thaw cycles. Store at 4°C for frequent use. Store at -20 to -80°C for twelve months from the date of receipt.
<b>Note</b>	For research use only.

## Data Image

---



Western Blot

Recombinant Protein lysates were subjected to SDS PAGE followed by western blot with Bla g 2/Allergen Bla g II antibody (PWK33401) at 1  $\mu$ g/ml.

Lane 1: Recombinant Protein

Second Ab: Goat Anti-Rabbit IgG H&L Polyclonal antibody, HRP (PTB96431) at 0.1  $\mu$ g/mL.

Predict MW: German cockroach

Observed MW: