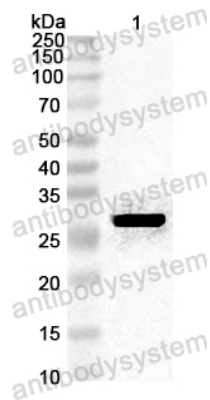


Anti-Blomia tropicalis (Mite) Blo t 1.0101 Polyclonal Antibody

Summary

Catalog No.	PXX53201
Host species	Rabbit
Species reactivity	Blomia tropicalis (Mite)
Immunogen	E. coli - derived recombinant Blomia tropicalis (Mite) Blo t 1.0101 (Ile1-Leu221).
Form	Liquid
Storage buffer	0.01M PBS, pH 7.4, 50% Glycerol, 0.05% Proclin 300.
Clonality	Polyclonal
Isotype	IgG
Applications	ELISA, IHC, WB
Target	Cysteine protease
Purification	Antigen affinity purification.
Accession	Q95PJ4
Stability and Storage	Use a manual defrost freezer and avoid repeated freeze thaw cycles. Store at 4°C for frequent use. Store at -20 to -80°C for twelve months from the date of receipt.
Note	For research use only.

Data Image



Western Blot

Recombinant Protein lysates were subjected to SDS PAGE followed by western blot with Blo t 1.0101 antibody (PXX53201) at 1 µg/ml.

Lane 1: Recombinant protein

Second Ab: Goat Anti-Rabbit IgG H&L Polyclonal antibody, HRP (PTB96431) at 0.1 µg/mL.

Predict MW: 27 kDa

Observed MW: 27 kDa