

# Anti-Common timothy PHLPII/Phl p 2 Polyclonal Antibody

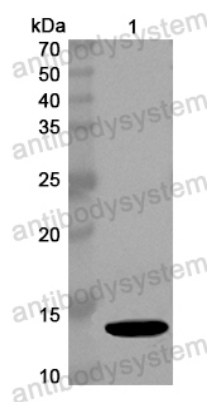
## Summary

---

<b>Catalog No.</b>	PZZ01901
<b>Host species</b>	Rabbit
<b>Species reactivity</b>	Phleum pratense (Common timothy)
<b>Immunogen</b>	E. coli - derived recombinant Common timothy PHLPII/Phl p 2 (Val27-Glu122).
<b>Form</b>	Liquid
<b>Storage buffer</b>	0.01M PBS, pH 7.4, 50% Glycerol, 0.05% Proclin 300.
<b>Clonality</b>	Polyclonal
<b>Isotype</b>	IgG
<b>Applications</b>	ELISA, IHC, WB
<b>Target</b>	Pollen allergen Phl p 2, Allergen Phl p II, Phl p 2, PHLPII
<b>Purification</b>	Antigen affinity purification.
<b>Accession</b>	P43214
<b>Stability and Storage</b>	Use a manual defrost freezer and avoid repeated freeze thaw cycles. Store at 4°C for frequent use. Store at -20 to -80°C for twelve months from the date of receipt.
<b>Note</b>	For research use only.

## Data Image

---



Western Blot

Recombinant Protein lysates were subjected to SDS PAGE followed by western blot with PHLPII/Phl p 2 antibody (PZZ01901) at 1  $\mu$ g/ml.

Lane 1: Recombinant Protein

Second Ab: Goat Anti-Rabbit IgG H&L Polyclonal antibody, HRP (PTB96431) at 0.1  $\mu$ g/mL.

Predict MW: Common timothy

Observed MW: