

# Anti-Human NEDD4L/Nedd4-2 Polyclonal Antibody

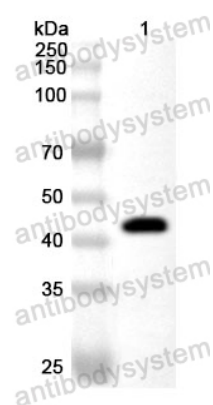
## Summary

---

<b>Catalog No.</b>	PHK09101
<b>Host species</b>	Rabbit
<b>Species reactivity</b>	Human
<b>Immunogen</b>	E. coli - derived recombinant Human NEDD4L/Nedd4-2 (Glu629-Asp975).
<b>Form</b>	Liquid
<b>Storage buffer</b>	0.01M PBS, pH 7.4, 50% Glycerol, 0.05% Proclin 300.
<b>Clonality</b>	Polyclonal
<b>Isotype</b>	IgG
<b>Applications</b>	ELISA, IHC, WB
<b>Target</b>	NEDD4L, E3 ubiquitin-protein ligase NEDD4-like, NEDD4.2, NEDL3, Nedd4-2, HECT-type E3 ubiquitin transferase NED4L, KIAA0439
<b>Purification</b>	Antigen affinity purification.
<b>Accession</b>	Q96PU5
<b>Stability and Storage</b>	Use a manual defrost freezer and avoid repeated freeze thaw cycles. Store at 4°C for frequent use. Store at -20 to -80°C for twelve months from the date of receipt.
<b>Note</b>	For research use only.

## Data Image

---



Western Blot

Recombinant Protein lysates were subjected to SDS PAGE followed by western blot with NEDD4L/Nedd4-2 antibody (PHK09101) at 1 µg/ml.

Lane 1: Recombinant protein

Second Ab: Goat Anti-Rabbit IgG H&L Polyclonal antibody, HRP (PTB96431) at 0.1 µg/mL.

Predict MW: 43 kDa

Observed MW: 43 kDa