

# Anti-Tupaia chinensis CD20/MS4A1 Polyclonal Antibody

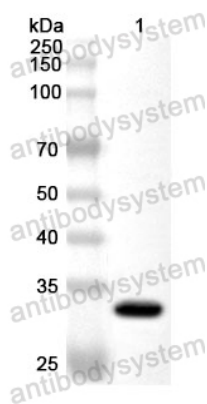
## Summary

---

<b>Catalog No.</b>	PWC90701
<b>Host species</b>	Rabbit
<b>Species reactivity</b>	Tupaia chinensis (Chinese tree shrew)
<b>Immunogen</b>	E. coli - derived recombinant Tupaia chinensis CD20/MS4A1 (Lys142-Ser185).
<b>Form</b>	Liquid
<b>Storage buffer</b>	0.01M PBS, pH 7.4, 50% Glycerol, 0.05% Proclin 300.
<b>Clonality</b>	Polyclonal
<b>Isotype</b>	IgG
<b>Applications</b>	ELISA, IHC, WB
<b>Target</b>	B-lymphocyte surface antigen B1, Membrane-spanning 4-domains subfamily A member 1, MS4A1, Leukocyte surface antigen Leu-16, B-lymphocyte antigen CD20, Bp35, CD20,
<b>Purification</b>	Antigen affinity purification.
<b>Accession</b>	XP_014440391.1
<b>Stability and Storage</b>	Use a manual defrost freezer and avoid repeated freeze thaw cycles. Store at 4°C for frequent use. Store at -20 to -80°C for twelve months from the date of receipt.
<b>Note</b>	For research use only.

## Data Image

---



Western Blot

Recombinant Protein lysates were subjected to SDS PAGE followed by western blot with CD20/MS4A1 antibody (PWC90701) at 1  $\mu$ g/ml.

Lane 1: Recombinant protein

Second Ab: Goat Anti-Rabbit IgG H&L Polyclonal antibody, HRP (PTB96431) at 0.1  $\mu$ g/mL.

Predict MW: 33 kDa

Observed MW: 33 kDa