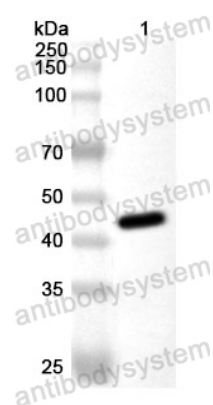


Anti-Tupaia chinensis CD4 Polyclonal Antibody

Summary

Catalog No.	PWB95901
Host species	Rabbit
Species reactivity	Tupaia chinensis (Chinese tree shrew)
Immunogen	E. coli - derived recombinant Tupaia chinensis CD4 (Lys26-Thr394).
Form	Liquid
Storage buffer	0.01M PBS, pH 7.4, 50% Glycerol, 0.05% Proclin 300.
Clonality	Polyclonal
Isotype	IgG
Applications	ELISA, IHC, WB
Target	T-cell surface antigen T4/Leu-3, T-cell surface glycoprotein CD4, CD4,
Purification	Antigen affinity purification.
Accession	XP_014440610.1
Stability and Storage	Use a manual defrost freezer and avoid repeated freeze thaw cycles. Store at 4°C for frequent use. Store at -20 to -80°C for twelve months from the date of receipt.
Note	For research use only.

Data Image



Western Blot

Recombinant Protein lysates were subjected to SDS PAGE followed by western blot with CD4 antibody (PWB95901) at 1 μ g/ml.

Lane 1: Recombinant protein

Second Ab: Goat Anti-Rabbit IgG H&L Polyclonal antibody, HRP (PTB96431) at 0.1 μ g/mL.

Predict MW: 43 kDa

Observed MW: 43 kDa