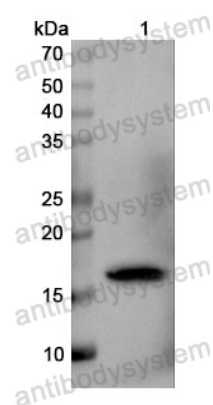


Anti-Tupaia chinensis CD8A Polyclonal Antibody

Summary

Catalog No.	PWB96001
Host species	Rabbit
Species reactivity	Tupaia chinensis (Chinese tree shrew)
Immunogen	E. coli - derived recombinant Tupaia chinensis CD8A (Trp1-Asp131).
Form	Liquid
Storage buffer	0.01M PBS, pH 7.4, 50% Glycerol, 0.05% Proclin 300.
Clonality	Polyclonal
Isotype	IgG
Applications	ELISA, IHC, WB
Target	T-cell surface glycoprotein CD8 alpha chain, CD8a, T-lymphocyte differentiation antigen T8/Leu-2, MAL, CD8A,
Purification	Antigen affinity purification.
Accession	XP_014439628.1
Stability and Storage	Use a manual defrost freezer and avoid repeated freeze thaw cycles. Store at 4°C for frequent use. Store at -20 to -80°C for twelve months from the date of receipt.
Note	For research use only.

Data Image



Western Blot

Recombinant Protein lysates were subjected to SDS PAGE followed by western blot with CD8A antibody (PWB96001) at 1 μ g/ml.

Lane 1: Recombinant protein

Second Ab: Goat Anti-Rabbit IgG H&L Polyclonal antibody, HRP (PTB96431) at 0.1 μ g/mL.

Predict MW: 16 kDa

Observed MW: 16 kDa