

# Anti-Human SMAD7 Polyclonal Antibody

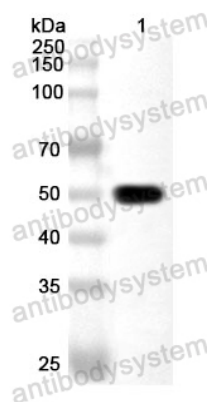
## Summary

---

<b>Catalog No.</b>	PHA41501
<b>Host species</b>	Rabbit
<b>Species reactivity</b>	Human, Mouse, Rat
<b>Immunogen</b>	E. coli - derived recombinant Human SMAD7 (Met1-Arg426).
<b>Form</b>	Liquid
<b>Storage buffer</b>	0.01M PBS, pH 7.4, 50% Glycerol, 0.05% Proclin 300.
<b>Clonality</b>	Polyclonal
<b>Isotype</b>	IgG
<b>Applications</b>	ELISA, IHC, IF, WB
<b>Target</b>	Mothers against decapentaplegic homolog 8, MADH8, SMAD family member 7, MADH7, SMAD 7, Mothers against decapentaplegic homolog 7, Smad7, hSMAD7, Mothers against DPP homolog 7, SMAD7, Mothers against DPP homolog 8, MAD homolog 8, MAD homolog 7
<b>Purification</b>	Antigen affinity purification.
<b>Accession</b>	O15105
<b>Stability and Storage</b>	Use a manual defrost freezer and avoid repeated freeze thaw cycles. Store at 4°C for frequent use. Store at -20 to -80°C for twelve months from the date of receipt.
<b>Note</b>	For research use only.

## Data Image

---



Western Blot

Recombinant Protein lysates were subjected to SDS PAGE followed by western blot with SMAD7 antibody (PHA41501) at 1  $\mu$ g/ml.

Lane 1: Recombinant Protein

Second Ab: Goat Anti-Rabbit IgG H&L Polyclonal antibody, HRP (PTB96431) at 0.1  $\mu$ g/mL.

Predict MW: Human

Observed MW: