

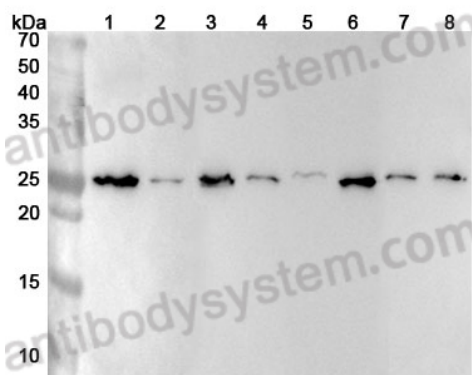
Anti-Human PCMT1 Polyclonal Antibody

Summary

Catalog No.	PHD49801
Host species	Rabbit
Species reactivity	Human
Immunogen	E. coli - derived recombinant Human PCMT1 (Met1-Lys227).
Form	Liquid
Storage buffer	0.01M PBS, pH 7.4, 50% Glycerol, 0.05% Proclin 300.
Clonality	Polyclonal
Isotype	IgG
Applications	ELISA, IHC, WB
Target	PIMT, L-isoaspartyl protein carboxyl methyltransferase, PCMT1, Protein-L-isoaspartate(D-aspartate) O-methyltransferase, Protein L-isoaspartyl/D-aspartyl methyltransferase, Protein-beta-aspartate methyltransferase
Purification	Antigen affinity purification.
Accession	P22061
Stability and Storage	Use a manual defrost freezer and avoid repeated freeze thaw cycles. Store at 4°C for frequent use. Store at -20 to -80°C for twelve months from the date of receipt.
Note	For research use only.

Data Image

Various lysates were subjected to SDS PAGE followed by western blot with PCMT1 antibody (PHD49801) at 1 µg/ml.



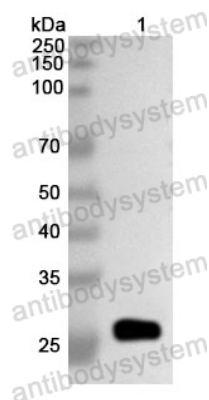
Western Blot

Lane 1: 293T cell lysate
 Lane 2: Hela cell lysate
 Lane 3: HepG2 cell lysate
 Lane 4: K562 cell lysate
 Lane 5: Mouse testis lysate
 Lane 6: Mouse heart lysate
 Lane 7: Rat testis lysate
 Lane 8: Rat heart lysate

Second Ab: Goat Anti-Rabbit IgG H&L Polyclonal antibody, HRP (PTB96431) at 0.1 µg/mL.

Predict MW: 25 kDa

Observed MW: 25 kDa



Western Blot

Recombinant Protein lysates were subjected to SDS PAGE followed by western blot with PCMT1 antibody (PHD49801) at 1 µg/ml.

Lane 1: Recombinant protein

Second Ab: Goat Anti-Rabbit IgG H&L Polyclonal antibody, HRP (PTB96431) at 0.1 µg/mL.

Predict MW: 27 kDa

Observed MW: 27 kDa