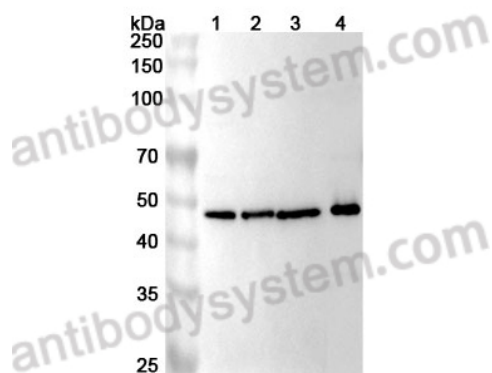


Anti-Human ICA1 Polyclonal Antibody

Summary

Catalog No.	PHG03901
Host species	Rabbit
Species reactivity	Human
Immunogen	E. coli - derived recombinant Human ICA1 (Met1-Gly258).
Form	Liquid
Storage buffer	0.01M PBS, pH 7.4, 50% Glycerol, 0.05% Proclin 300.
Clonality	Polyclonal
Isotype	IgG
Applications	ELISA, IHC, WB
Target	p69, ICA1, Islet cell autoantigen 1, ICA69, 69 kDa islet cell autoantigen, ICAp69, Islet cell autoantigen p69
Purification	Antigen affinity purification.
Accession	Q05084
Stability and Storage	Use a manual defrost freezer and avoid repeated freeze thaw cycles. Store at 4°C for frequent use. Store at -20 to -80°C for twelve months from the date of receipt.
Note	For research use only.

Data Image



Western Blot

Various lysates were subjected to SDS PAGE followed by western blot with ICA1 antibody (PHG03901) at 1 μ g/ml.

Lane 1: A549 cell lysate

Lane 2: BxPC-3 cell lysate

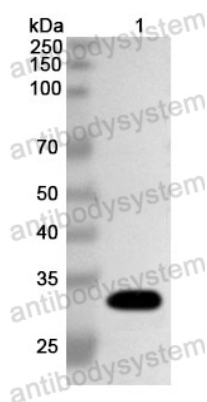
Lane 3: U87 cell lysate

Lane 4: Mouse pancears lysate

Second Ab: Goat Anti-Rabbit IgG H&L Polyclonal antibody, HRP (PTB96431) at 0.1 μ g/mL.

Predict MW: 58 kDa

Observed MW: 48 kDa



Western Blot

Recombinant Protein lysates were subjected to SDS PAGE followed by western blot with ICA1 antibody (PHG03901) at 1 μ g/ml.

Lane 1: Recombinant protein

Second Ab: Goat Anti-Rabbit IgG H&L Polyclonal antibody, HRP (PTB96431) at 0.1 μ g/mL.

Predict MW: 33 kDa

Observed MW: 33 kDa