

# Anti-Human PTPRR Polyclonal Antibody

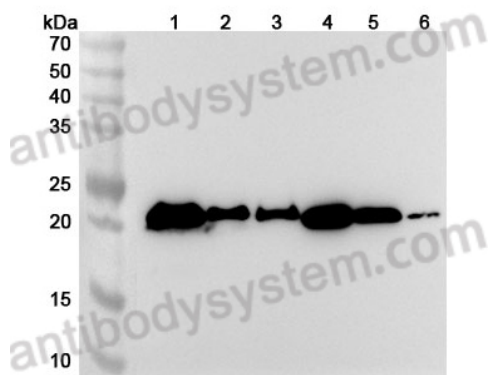
## Summary

---

<b>Catalog No.</b>	PHH04901
<b>Host species</b>	Rabbit
<b>Species reactivity</b>	Human
<b>Immunogen</b>	E. coli - derived recombinant Human PTPRR (Met1-Ser171).
<b>Form</b>	Liquid
<b>Storage buffer</b>	0.01M PBS, pH 7.4, 50% Glycerol, 0.05% Proclin 300.
<b>Concentration</b>	1.03 mg/ml
<b>Clonality</b>	Polyclonal
<b>Isotype</b>	IgG
<b>Applications</b>	ELISA, IHC, WB
<b>Target</b>	R-PTP-R, Receptor-type tyrosine-protein phosphatase R, NC-PTPCOM1, PTPRQ, Ch-1PTPase, PTPRR, Protein-tyrosine phosphatase PCPTP1, ECPTP
<b>Purification</b>	Antigen affinity purification.
<b>Accession</b>	Q15256
<b>Stability and Storage</b>	Use a manual defrost freezer and avoid repeated freeze thaw cycles. Store at 4°C for frequent use. Store at -20 to -80°C for twelve months from the date of receipt.
<b>Note</b>	For research use only.

## Data Image

---



Western Blot

Various lysates were subjected to SDS PAGE followed by western blot with TRNAU1AP antibody (PHH04901) at 1 µg/ml.

Lane 1: Mouse brain lysate

Lane 2: Mouse lung lysate

Lane 3: Mouse colon lysate

Lane 4: Rat brain lysate

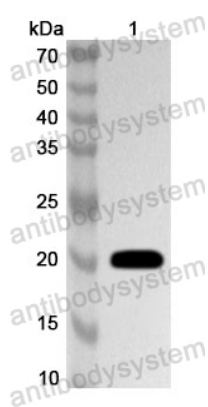
Lane 5: Rat lung lysate

Lane 6: Rat colon lysate

Second Ab: Goat Anti-Rabbit IgG H&L Polyclonal antibody, HRP (PTB96431) at 0.1 µg/mL.

Predict MW: 32 kDa

Observed MW: 21 kDa



Western Blot

Recombinant Protein lysates were subjected to SDS PAGE followed by western blot with PTPRR antibody (PHH04901) at 1 µg/ml.

Lane 1: Recombinant protein

Second Ab: Goat Anti-Rabbit IgG H&L Polyclonal antibody, HRP (PTB96431) at 0.1 µg/mL.

Predict MW: 21 kDa

Observed MW: 21 kDa