

# Anti-Human RALB Polyclonal Antibody

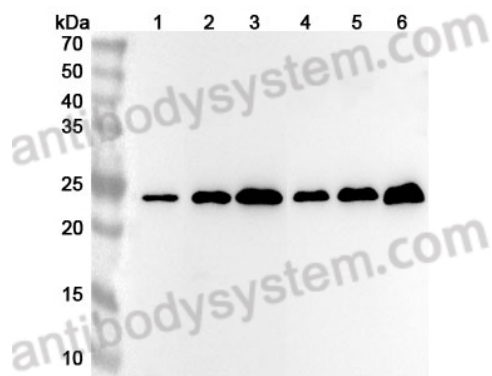
## Summary

---

|                              |  |
|------------------------------|--|
| <b>Catalog No.</b>           | PHC87301   |
| <b>Host species</b>          | Rabbit   |
| <b>Species reactivity</b>    | Human  |
| <b>Immunogen</b>             | E. coli - derived recombinant Human RALB (Ser11-Leu206).   |
| <b>Form</b>                  | Liquid   |
| <b>Storage buffer</b>        | 0.01M PBS, pH 7.4, 50% Glycerol, 0.05% Proclin 300.  |
| <b>Clonality</b>             | Polyclonal   |
| <b>Isotype</b>               | IgG  |
| <b>Applications</b>          | ELISA, IHC, WB   |
| <b>Target</b>                | Ras-related protein Ral-B, RALB  |
| <b>Purification</b>          | Antigen affinity purification.   |
| <b>Accession</b>             | P11234   |
| <b>Stability and Storage</b> | Use a manual defrost freezer and avoid repeated freeze thaw cycles. Store at 4°C for frequent use. Store at -20 to -80°C for twelve months from the date of receipt. |
| <b>Note</b>                  | For research use only.   |

## Data Image

---



Western Blot

Various lysates were subjected to SDS PAGE followed by western blot with RALB antibody (PHC87301) at 1  $\mu$ g/ml.

Lane 1: MCF-7 cell lysate

Lane 2: Mouse brain lysate

Lane 3: Mouse lung lysate

Lane 4: Rat brain lysate

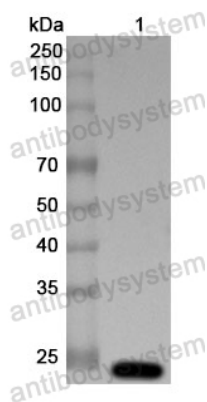
Lane 5: Rat lung lysate

Lane 6: Rat kidney lysate

Second Ab: Goat Anti-Rabbit IgG H&L Polyclonal antibody, HRP (PTB96431) at 0.1  $\mu$ g/mL.

Predict MW: 23 kDa

Observed MW: 23 kDa



Western Blot

Recombinant Protein lysates were subjected to SDS PAGE followed by western blot with RALB antibody (PHC87301) at 1  $\mu$ g/ml.

Lane 1: Recombinant protein

Second Ab: Goat Anti-Rabbit IgG H&L Polyclonal antibody, HRP (PTB96431) at 0.1  $\mu$ g/mL.

Predict MW: 25 kDa

Observed MW: 25 kDa