

# Research Grade Cixutumumab

## Summary

---

<b>Catalog No.</b>	DHC29904
<b>Alternative Names</b>	IMC-A12, LY3012217, CAS: 947687-12-9
<b>Clone ID</b>	Cixutumumab
<b>Host species</b>	Human
<b>Species reactivity</b>	Human
<b>Form</b>	Liquid
<b>Storage buffer</b>	0.01M PBS, pH 7.4.
<b>Concentration</b>	1 mg/ml
<b>Purity</b>	>95% as determined by SDS-PAGE.
<b>Clonality</b>	Monoclonal
<b>Isotype</b>	IgG1-lambda
<b>Applications</b>	Research Grade Biosimilar
<b>Target</b>	CD221, Insulin-like growth factor 1 receptor, IGF1R, Insulin-like growth factor I receptor, IGF-I receptor
<b>Purification</b>	Protein A/G purified from cell culture supernatant.
<b>Endotoxin level</b>	Please contact with the lab for this information.
<b>Expression system</b>	Mammalian Cells
<b>Accession</b>	P08069

## Stability and Storage

Use a manual defrost freezer and avoid repeated freeze-thaw cycles.

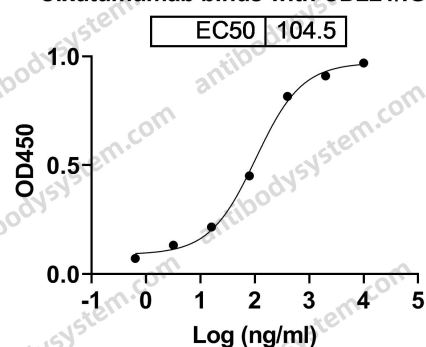
Store at 4°C short term (1-2 weeks). Store at -20°C 12 months. Store at -80°C long term.

## Note

For research use only. Not suitable for clinical or therapeutic use.

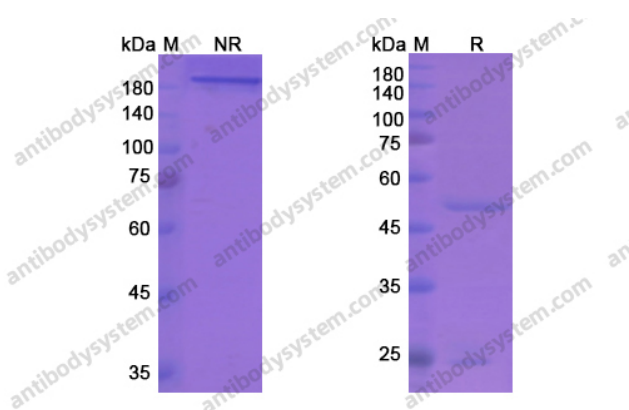
## Data Image

Cixutumumab binds with CD221/IGF1R



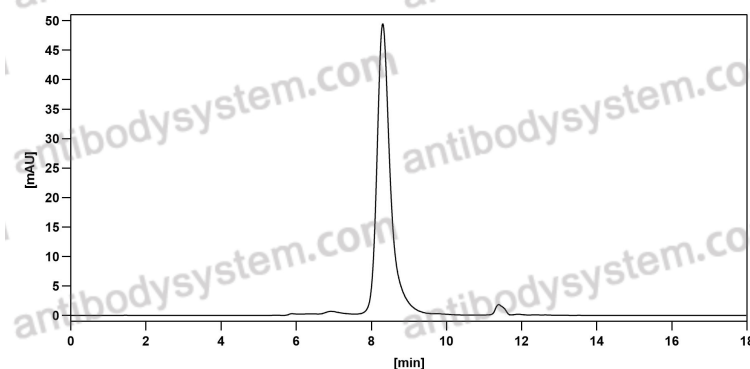
Detects Human CD221/IGF1R in indirect ELISAs.

Bioactivity



SDS PAGE for Cixutumumab

SDS-PAGE



The purity of this product is >95% as determined by SEC-HPLC.

SEC-HPLC