

# Anti-Human CD38/ADPRC 1 Antibody (SAA2211), PE

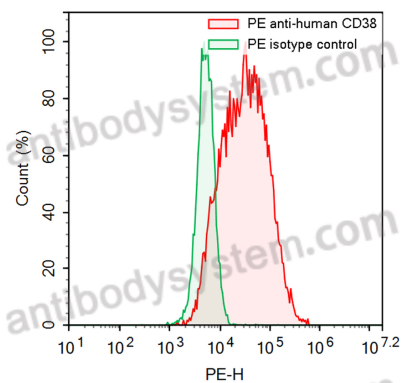
## Summary

---

<b>Catalog No.</b>	FHD80862
<b>Clone ID</b>	SAA2211
<b>Host species</b>	Human
<b>Conjugation</b>	PE
<b>Species reactivity</b>	Human
<b>Form</b>	Liquid
<b>Storage buffer</b>	0.01M PBS, pH 7.4, 0.2% BSA, 0.05% Proclin 300.
<b>Clonality</b>	Monoclonal
<b>Isotype</b>	IgG1, lambda
<b>Applications</b>	ELISA, FCM
<b>Target</b>	Cyclic ADP-ribose hydrolase 1, ADP-ribosyl cyclase/cyclic ADP-ribose hydrolase 1, cADPr hydrolase 1, 2'-phospho-ADP-ribosyl cyclase/2'-phospho-cyclic-ADP-ribose transferase, T10, 2'-phospho-cyclic-ADP-ribose transferase, CD38, ADPRC 1, ADP-ribosyl cyclase 1, 2'-phospho-ADP-ribosyl cyclase
<b>Purification</b>	Affinity chromatography.
<b>Endotoxin level</b>	Please contact with the lab for this information.
<b>Accession</b>	P28907
<b>Stability and Storage</b>	Store at 4°C for 12 months. Protect from light. Do not freeze.
<b>Note</b>	For research use only.

## Data Image

---



Flow-cytometry

Flow-cytometry using PE anti-Human CD38 antibody. RPMI-8226 cells were stained with an irrelevant antibody (Green Histogram) or a PE anti-Human CD38 antibody monoclonal antibody (Catalog # FHD80862 , Red Histogram) at a concentration of 5 µg/ml for 30 mins at RT. After washing, cells analysed on a NovoCyt Flow Cytometer.