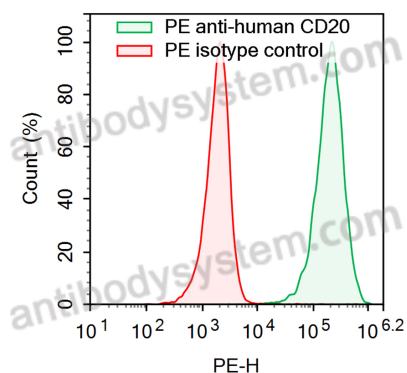


Anti-Human CD20/MS4A1 Antibody (SAA2209), PE

Summary

Catalog No.	FHC90762
Clone ID	SAA2209
Host species	Human
Conjugation	PE
Species reactivity	Human
Form	Liquid
Storage buffer	0.01M PBS, pH 7.4, 0.2% BSA, 0.05% Proclin 300.
Clonality	Monoclonal
Isotype	IgG1, kappa
Applications	ELISA, FCM
Target	B-lymphocyte surface antigen B1, Membrane-spanning 4-domains subfamily A member 1, MS4A1, Leukocyte surface antigen Leu-16, B-lymphocyte antigen CD20, Bp35, CD20
Purification	Affinity chromatography.
Endotoxin level	Please contact with the lab for this information.
Accession	P11836
Stability and Storage	Store at 4°C for 12 months. Protect from light. Do not freeze.
Note	For research use only.

Data Image



Flow-cytometry

Flow-cytometry using PE anti-Human CD20 antibody. Daudi cells were stained with an irrelevant antibody (Red Histogram) or a PE anti-Human CD20 antibody monoclonal antibody (Catalog # FHC90762 , Green Histogram) at a concentration of 5 µg/ml for 30 mins at RT. After washing, cells analysed on a NovoCyt Flow Cytometer.