

Anti-Human CD38/ADPRC 1 Antibody (SAA2211), FITC

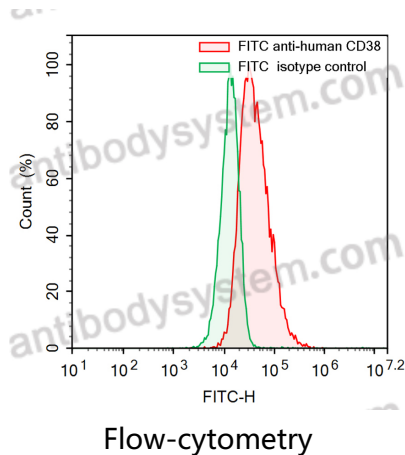
Summary

Catalog No.	FHD80861
Clone ID	SAA2211
Host species	Human
Conjugation	FITC
Species reactivity	Human
Form	Liquid
Storage buffer	0.01M PBS, pH 7.4, 0.2% BSA, 0.05% Proclin 300.
Clonality	Monoclonal
Isotype	IgG1, lambda
Applications	ELISA, FCM
Target	Cyclic ADP-ribose hydrolase 1, ADP-ribosyl cyclase/cyclic ADP-ribose hydrolase 1, cADPr hydrolase 1, 2'-phospho-ADP-ribosyl cyclase/2'-phospho-cyclic-ADP-ribose transferase, T10, 2'-phospho-cyclic-ADP-ribose transferase, CD38, ADPRC 1, ADP-ribosyl cyclase 1, 2'-phospho-ADP-ribosyl cyclase
Purification	Affinity chromatography.
Endotoxin level	Please contact with the lab for this information.
Accession	P28907
Stability and Storage	Store at 4°C for 12 months. Protect from light. Do not freeze.

Note

For research use only.

Data Image



Flow-cytometry using FITC anti-Human CD38 antibody. RPMI-8226 cells were stained with an irrelevant antibody (Green Histogram) or a FITC anti-Human CD38 antibody monoclonal antibody (Catalog # FHD80861 , Red Histogram) at a concentration of 5 $\mu\text{g/ml}$ for 30 mins at RT. After washing, cells analysed on a NovoCyt Flow Cytometer.