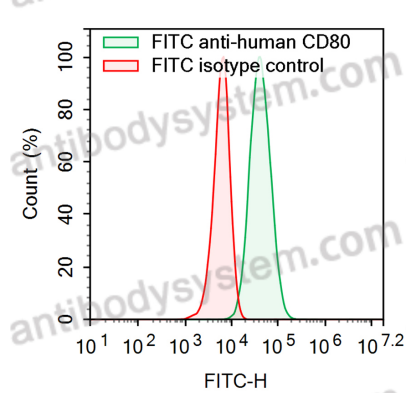


Anti-Human CD80/B7-1 Antibody (SAA2207), FITC

Summary

Catalog No.	FHE03421
Clone ID	SAA2207
Host species	Human
Conjugation	FITC
Species reactivity	Human
Form	Liquid
Storage buffer	0.01M PBS, pH 7.4, 0.2% BSA, 0.05% Proclin 300.
Clonality	Monoclonal
Isotype	IgG1, kappa
Applications	ELISA, FCM
Target	CD80, BB1, T-lymphocyte activation antigen CD80, CD28LG, B7, CD28LG1, LAB7, Activation B7-1 antigen, CTLA-4 counter-receptor B7.1
Purification	Affinity chromatography.
Endotoxin level	Please contact with the lab for this information.
Accession	P33681
Stability and Storage	Store at 4°C for 12 months. Protect from light. Do not freeze.
Note	For research use only.

Data Image



Flow-cytometry

Flow-cytometry using FITC anti-Human CD80 antibody. Raji cells were stained with an irrelevant antibody (Red Histogram) or a FITC anti-Human CD80 antibody monoclonal antibody (Catalog # FHE03421 , Green Histogram) at a concentration of 5 µg/ml for 30 mins at RT. After washing, cells analysed on a NovoCyt Flow Cytometer.