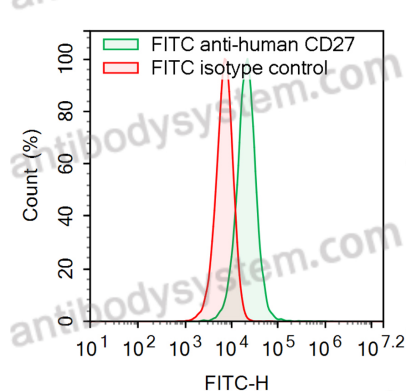


Anti-Human CD27 Antibody (1F5), FITC

Summary

Catalog No.	FHD72231
Clone ID	1F5
Host species	Human
Conjugation	FITC
Species reactivity	Human
Form	Liquid
Storage buffer	0.01M PBS, pH 7.4, 0.2% BSA, 0.05% Proclin 300.
Clonality	Monoclonal
Isotype	IgG1, kappa
Applications	FCM
Target	CD27L receptor, TNFRSF7, T14, CD27 antigen, Tumor necrosis factor receptor superfamily member 7, CD27, T-cell activation antigen CD27
Purification	Affinity chromatography.
Endotoxin level	Please contact with the lab for this information.
Accession	P26842
Stability and Storage	Store at 4°C for 12 months. Protect from light. Do not freeze.
Note	For research use only.

Data Image



Flow-cytometry

Flow-cytometry using FITC anti-Human CD27 antibody. Raji cells were stained with an irrelevant antibody (Red Histogram) or a FITC anti-Human CD27 antibody monoclonal antibody (Catalog # FHD72231 , Green Histogram) at a concentration of 5 µg/ml for 30 mins at RT. After washing, cells analysed on a NovoCyte Flow Cytometer.