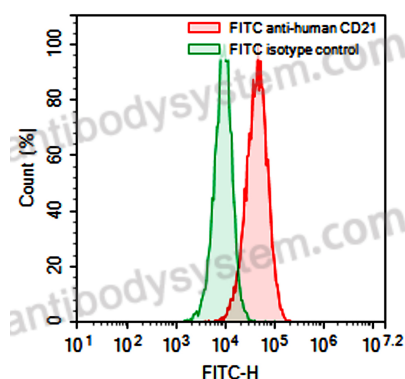


Anti-Human CD21/CR2 Antibody (Ab652), FITC

Summary

Catalog No.	FHD36831
Clone ID	Ab652
Host species	Mouse
Conjugation	FITC
Species reactivity	Human
Form	Liquid
Storage buffer	0.01M PBS, pH 7.4, 0.2% BSA, 0.05% Proclin 300.
Clonality	Monoclonal
Isotype	IgG2a, kappa
Applications	ELISA, FCM
Target	Cr2, Complement C3d receptor, C3DR, Epstein-Barr virus receptor, Complement receptor type 2, CR2, EBV receptor, CD21
Purification	Affinity chromatography.
Endotoxin level	Please contact with the lab for this information.
Accession	P20023
Stability and Storage	Store at 4°C for 12 months. Protect from light. Do not freeze.
Note	For research use only.

Data Image



Flow-cytometry

Flow-cytometry using FITC anti-Human CD21 antibody. Raji cells were stained with an irrelevant antibody (Green Histogram) or a FITC anti-Human CD21 antibody monoclonal antibody (Catalog # FHD36831 , Red Histogram) at a concentration of 5 $\mu\text{g/ml}$ for 30 mins at RT. After washing, cells analysed on a NovoCyt Flow Cytometer.