

# Anti-Human HLA-DR Monomorphic Antibody (L243), PE

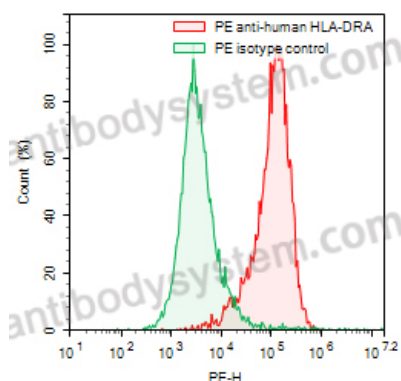
## Summary

---

<b>Catalog No.</b>	FHM03312
<b>Clone ID</b>	L243
<b>Host species</b>	Mouse
<b>Conjugation</b>	PE
<b>Species reactivity</b>	Human
<b>Form</b>	Liquid
<b>Storage buffer</b>	0.01M PBS, pH 7.4, 0.2% BSA, 0.05% Proclin 300.
<b>Concentration</b>	0.5 mg/ml
<b>Clonality</b>	Monoclonal
<b>Isotype</b>	IgG1
<b>Applications</b>	FCM
<b>Endotoxin level</b>	Please contact with the lab for this information.
<b>Stability and Storage</b>	Store at 4°C for 12 months. Protect from light. Do not freeze.
<b>Note</b>	For research use only.

## Data Image

---



Flow-cytometry

Flow-cytometry using PE anti-human HLA-DRA antibody. Daudi cells were stained with an irrelevant antibody (Green Histogram) or a PE anti-human HLA-DRA antibody monoclonal antibody (Catalog # FHM03312, Red Histogram) at a concentration of 5 µg/ml for 30 mins at RT. After washing, cells analysed on a NovoCyt Flow Cytometer.