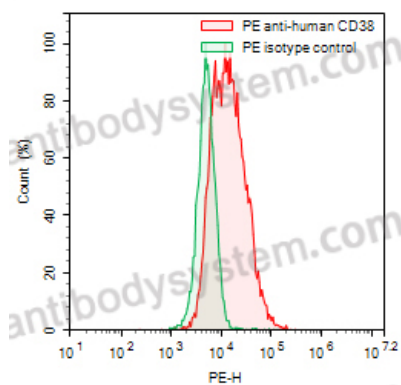


Anti-Human CD38 Antibody (38SB19), PE

Summary

Catalog No.	FHD80822
Clone ID	38SB19
Host species	Human
Conjugation	PE
Species reactivity	Human
Form	Liquid
Storage buffer	0.01M PBS, pH 7.4, 0.2% BSA, 0.05% Proclin 300.
Concentration	0.5 mg/ml
Clonality	Monoclonal
Isotype	IgG1, kappa
Applications	FCM
Target	Cyclic ADP-ribose hydrolase 1, ADP-ribosyl cyclase/cyclic ADP-ribose hydrolase 1, cADPr hydrolase 1, 2'-phospho-ADP-ribosyl cyclase/2'-phospho-cyclic-ADP-ribose transferase, T10, 2'-phospho-cyclic-ADP-ribose transferase, CD38, ADPRC 1, ADP-ribosyl cyclase 1, 2'-phospho-ADP-ribosyl cyclase
Endotoxin level	Please contact with the lab for this information.
Accession	P28907
Stability and Storage	Store at 4°C for 12 months. Protect from light. Do not freeze.
Note	For research use only.

Data Image



Flow-cytometry

Flow-cytometry using PE anti-human CD38 antibody. RPMI-8226 cells were stained with an irrelevant antibody (Green Histogram) or a PE anti-human CD38 antibody monoclonal antibody (Catalog # FHD80822, Red Histogram) at a concentration of 5 $\mu\text{g/ml}$ for 30 mins at RT. After washing, cells analysed on a NovoCyt Flow Cytometer.