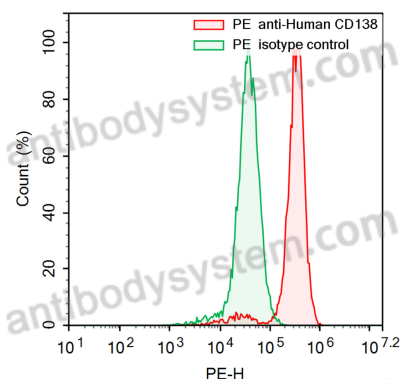


Anti-Human CD138/SDC1 Antibody (SAA0055), PE

Summary

Catalog No.	FHD30812
Clone ID	SAA0055
Host species	Mouse
Conjugation	PE
Species reactivity	Human
Form	Liquid
Storage buffer	0.01M PBS, pH 7.4, 0.2% BSA, 0.05% Proclin 300.
Concentration	0.5 mg/ml
Clonality	Monoclonal
Isotype	IgG1, kappa
Applications	FCM
Target	CD138, SDC1, SDC, Syndecan-1, SYND1
Endotoxin level	Please contact with the lab for this information.
Accession	P18827
Stability and Storage	Store at 4°C for 12 months. Protect from light. Do not freeze.
Note	For research use only.

Data Image



Flow-cytometry

Flow-cytometry using PE anti-Human CD138 antibody. RPMI8226 cells were stained with an irrelevant antibody (Green Histogram) or a PE anti-Human CD138 antibody monoclonal antibody (Catalog # FHD30812 , Red Histogram) at a concentration of 5 $\mu\text{g/ml}$ for 30 mins at RT. After washing, cells analysed on a NovoCyte Flow Cytometer.