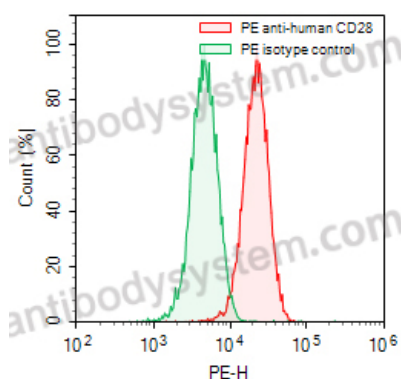


Anti-Human CD28 Antibody (15E8#), PE

Summary

Catalog No.	FHC83422
Clone ID	15E8#
Host species	Mouse
Conjugation	PE
Species reactivity	Human
Form	Liquid
Storage buffer	0.01M PBS, pH 7.4, 0.2% BSA, 0.05% Proclin 300.
Concentration	0.5 mg/ml
Clonality	Monoclonal
Isotype	IgG1
Applications	FCM
Target	CD28, TP44, T-cell-specific surface glycoprotein CD28
Endotoxin level	Please contact with the lab for this information.
Accession	P10747
Stability and Storage	Store at 4°C for 12 months. Protect from light. Do not freeze.
Note	For research use only.

Data Image



Flow-cytometry

Flow-cytometry using PE anti-human CD28 antibody. RPMI-8226 cells were stained with an irrelevant antibody (Green Histogram) or a PE anti-human CD28 antibody monoclonal antibody (Catalog # FHC83422, Red Histogram) at a concentration of 5 $\mu\text{g}/\text{ml}$ for 30 mins at RT. After washing, cells analysed on a NovoCyt Flow Cytometer.