

# Anti-Human CD28 Antibody (SAA0010), PE

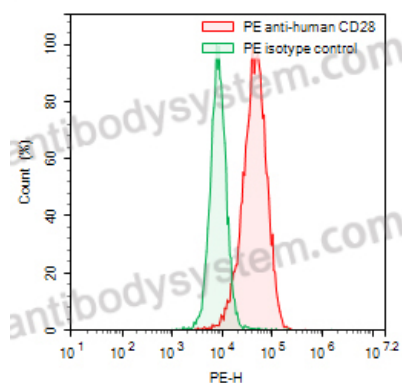
## Summary

---

|                              |   |
|------------------------------|---|
| <b>Catalog No.</b>           | FHC83412  |
| <b>Clone ID</b>              | SAA0010   |
| <b>Host species</b>          | Human   |
| <b>Conjugation</b>           | PE  |
| <b>Species reactivity</b>    | Human   |
| <b>Form</b>                  | Liquid  |
| <b>Storage buffer</b>        | 0.01M PBS, pH 7.4, 0.2% BSA, 0.05% Proclin 300.                 |
| <b>Concentration</b>         | 0.5 mg/ml   |
| <b>Clonality</b>             | Monoclonal  |
| <b>Isotype</b>               | IgG4  |
| <b>Applications</b>          | ELISA, FCM, WB  |
| <b>Target</b>                | CD28, TP44, T-cell-specific surface glycoprotein CD28, RHC83401 |
| <b>Endotoxin level</b>       | Please contact with the lab for this information.               |
| <b>Accession</b>             | P10747  |
| <b>Stability and Storage</b> | Store at 4°C for 12 months. Protect from light. Do not freeze.  |
| <b>Note</b>                  | For research use only.  |

## Data Image

---



Flow-cytometry

Flow-cytometry using PE anti-human CD28 antibody. RPMI-8226 cells were stained with an irrelevant antibody (Green Histogram) or a PE anti-human CD28 antibody monoclonal antibody (Catalog # FHC83412, Red Histogram) at a concentration of 5 µg/ml for 30 mins at RT. After washing, cells analysed on a NovoCyt Flow Cytometer.