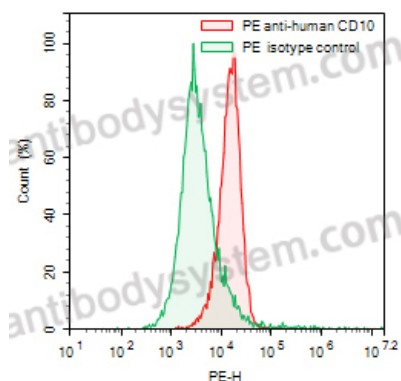


Anti-Human CD10/MME Antibody (NL-1), PE

Summary

Catalog No.	FHC33012
Clone ID	NL-1
Host species	Mouse
Conjugation	PE
Species reactivity	Human
Form	Liquid
Storage buffer	0.01M PBS, pH 7.4, 0.2% BSA, 0.05% Proclin 300.
Concentration	0.5 mg/ml
Clonality	Monoclonal
Isotype	IgG1, kappa
Applications	FCM
Target	Atriopeptidase, Common acute lymphocytic leukemia antigen, Neutral endopeptidase, Skin fibroblast elastase, CD10, SFE, CALLA, Neprilysin, Neutral endopeptidase 24.11, MME, NEP, Enkephalinase, EPN
Endotoxin level	Please contact with the lab for this information.
Accession	P08473
Stability and Storage	Store at 4°C for 12 months. Protect from light. Do not freeze.
Note	For research use only.

Data Image



Flow-cytometry

Flow-cytometry using PE anti-human CD10/MME antibody. Daudi cells were stained with an irrelevant antibody (Green Histogram) or a PE anti-human CD10/MME antibody monoclonal antibody (Catalog # FHC33012, Red Histogram) at a concentration of 5 µg/ml for 30 mins at RT. After washing, cells analysed on a NovoCyt Flow Cytometer.