

Research Grade Meplazumab

Summary

Catalog No.	DHE14001
Clone ID	Meplazumab
Host species	Humanized
Species reactivity	Human
Form	Liquid
Storage buffer	0.01M PBS, pH 7.4.
Concentration	1.8 mg/ml
Purity	>95% as determined by SDS-PAGE.
Clonality	Monoclonal
Isotype	IgG1-kappaorIGG2
Applications	Research Grade Biosimilar
Target	Hepatoma-associated antigen, BSG, HAb18G, 5F7, TCSF, OK blood group antigen, Collagenase stimulatory factor, CD147, Leukocyte activation antigen M6, Basigin, Extracellular matrix metalloproteinase inducer, EMMPRIN, Tumor cell-derived collagenase stimulatory factor
Purification	Protein A/G purified from cell culture supernatant.
Endotoxin level	Please contact with the lab for this information.
Expression system	Mammalian Cells
Accession	P35613

Stability and Storage

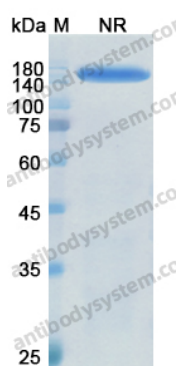
Use a manual defrost freezer and avoid repeated freeze-thaw cycles.

Store at 4°C short term (1-2 weeks). Store at -20°C 12 months. Store at -80°C long term.

Note

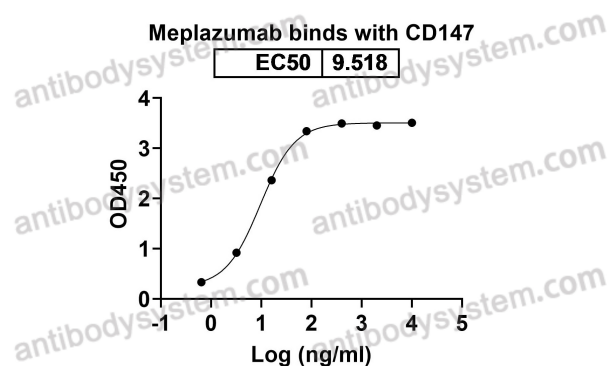
For research use only. Not suitable for clinical or therapeutic use.

Data Image



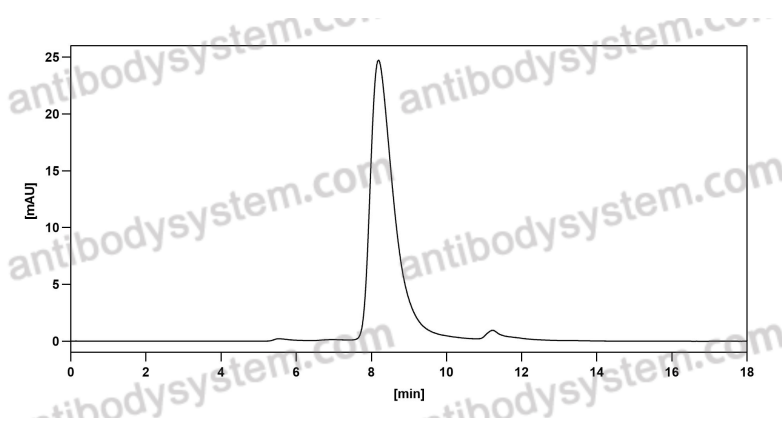
SDS PAGE for Meplazumab

SDS-PAGE



Detects CD147/BSG in indirect ELISAs.

Bioactivity



SEC-HPLC

The purity of this product is >95% as determined by SEC-HPLC.