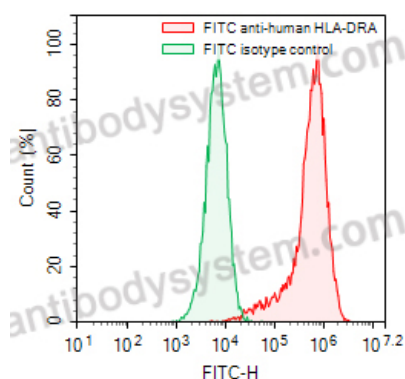


Anti-Human HLA-DRA Antibody (1D09C3), FITC

Summary

Catalog No.	FHM00811
Clone ID	1D09C3
Host species	Mouse
Conjugation	FITC
Species reactivity	Human
Form	Liquid
Storage buffer	0.01M PBS, pH 7.4, 0.2% BSA, 0.05% Proclin 300.
Concentration	0.5 mg/ml
Clonality	Monoclonal
Isotype	IgG1, kappa
Applications	FCM
Target	HLA-DRA1, MHC class II antigen DRA, HLA-DRA, HLA class II histocompatibility antigen, DR alpha chain
Endotoxin level	Please contact with the lab for this information.
Accession	P01903
Stability and Storage	Store at 4°C for 12 months. Protect from light. Do not freeze.
Note	For research use only.

Data Image



Flow-cytometry

Flow-cytometry using FITC anti-human HLA-DRA antibody. Daudi cells were stained with an irrelevant antibody (Green Histogram) or a FITC anti-human HLA-DRA antibody monoclonal antibody (Catalog # FHM00811, Red Histogram) at a concentration of 5 µg/ml for 30 mins at RT. After washing, cells analysed on a NovoCyt Flow Cytometer.