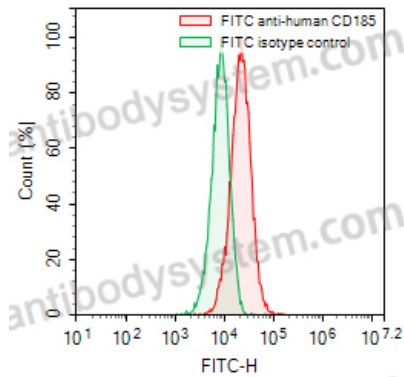


Anti-Human CD185/CXCR5 Antibody (16D7), FITC

Summary

Catalog No.	FHD99911
Clone ID	16D7
Host species	Human
Conjugation	FITC
Species reactivity	Human
Form	Liquid
Storage buffer	0.01M PBS, pH 7.4, 0.2% BSA, 0.05% Proclin 300.
Concentration	0.5 mg/ml
Clonality	Monoclonal
Isotype	IgG1, kappa
Applications	FCM
Target	CXC-R5, CD185, MDR-15, C-X-C chemokine receptor type 5, CXCR5, CXCR-5, MDR15, Monocyte-derived receptor 15, Burkitt lymphoma receptor 1, BLR1
Endotoxin level	Please contact with the lab for this information.
Accession	P32302
Stability and Storage	Store at 4°C for 12 months. Protect from light. Do not freeze.
Note	For research use only.

Data Image



Flow-cytometry

Flow-cytometry using FITC anti-human CD185(CXCR5) antibody. Raji cells were stained with an irrelevant antibody (Green Histogram) or a FITC anti-human CD185(CXCR5) antibody monoclonal antibody (Catalog # FHD99911, Red Histogram) at a concentration of 5 µg/ml for 30 mins at RT. After washing, cells analysed on a NovoCyte Flow Cytometer.