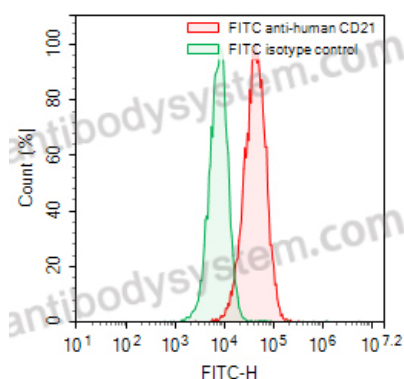


Anti-Human CD21/CR2 Antibody (HB5), FITC

Summary

Catalog No.	FHD36811
Clone ID	HB5
Host species	Mouse
Conjugation	FITC
Species reactivity	Human
Form	Liquid
Storage buffer	0.01M PBS, pH 7.4, 0.2% BSA, 0.05% Proclin 300.
Concentration	0.5 mg/ml
Clonality	Monoclonal
Isotype	IgG2a, kappa
Applications	FCM
Target	Cr2, Complement C3d receptor, C3DR, Epstein-Barr virus receptor, Complement receptor type 2, CR2, EBV receptor, CD21
Endotoxin level	Please contact with the lab for this information.
Accession	P20023
Stability and Storage	Store at 4°C for 12 months. Protect from light. Do not freeze.
Note	For research use only.

Data Image



Flow-cytometry

Flow-cytometry using FITC anti-human CD21 antibody. Raji cells were stained with an irrelevant antibody (Green Histogram) or a FITC anti-human CD21 antibody monoclonal antibody (Catalog # FHD36811, Red Histogram) at a concentration of 5 µg/ml for 30 mins at RT. After washing, cells analysed on a NovoCyt Flow Cytometer.