

# Anti-Human CD19 Antibody (HD37), FITC

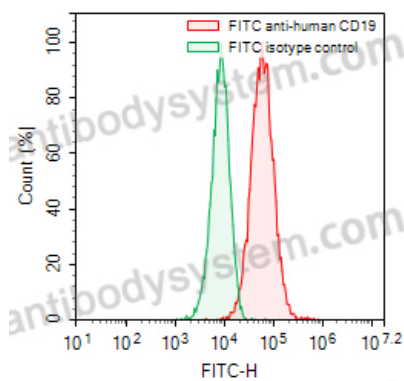
## Summary

---

<b>Catalog No.</b>	FHD10851
<b>Clone ID</b>	HD37
<b>Host species</b>	Mouse
<b>Conjugation</b>	FITC
<b>Species reactivity</b>	Human
<b>Form</b>	Liquid
<b>Storage buffer</b>	0.01M PBS, pH 7.4, 0.2% BSA, 0.05% Proclin 300.
<b>Concentration</b>	0.5 mg/ml
<b>Clonality</b>	Monoclonal
<b>Isotype</b>	IgG1, kappa
<b>Applications</b>	FCM
<b>Target</b>	CD19, Differentiation antigen CD19, T-cell surface antigen Leu-12, B-lymphocyte antigen CD19, B-lymphocyte surface antigen B4
<b>Endotoxin level</b>	Please contact with the lab for this information.
<b>Accession</b>	P15391
<b>Stability and Storage</b>	Store at 4°C for 12 months. Protect from light. Do not freeze.
<b>Note</b>	For research use only.

## Data Image

---



Flow-cytometry

Flow-cytometry using FITC anti-human CD19 antibody. Raji cells were stained with an irrelevant antibody (Green Histogram) or a FITC anti-human CD19 antibody monoclonal antibody (Catalog # FHD10851, Red Histogram) at a concentration of 5  $\mu\text{g/ml}$  for 30 mins at RT. After washing, cells analysed on a NovoCyt Flow Cytometer.