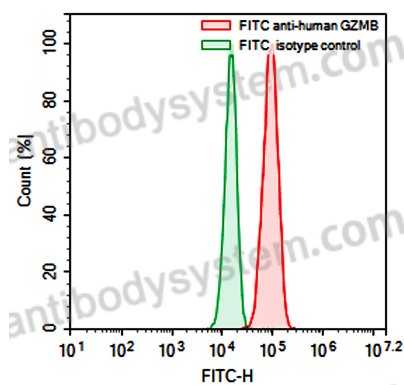


Anti-Human GZMB Antibody (Fv02), FITC

Summary

| | |
|------------------------------|---|
| Catalog No. | FHC79011 |
| Clone ID | Fv02 |
| Host species | Mouse |
| Conjugation | FITC |
| Species reactivity | Human |
| Form | Liquid |
| Storage buffer | 0.01M PBS, pH 7.4, 0.2% BSA, 0.05% Proclin 300. |
| Concentration | 0.5 mg/ml |
| Clonality | Monoclonal |
| Isotype | IgG1 |
| Applications | FCM |
| Target | Cathepsin G-like 1, Granzyme-2, GZMB, grzmB, Fragmentin-2, Human lymphocyte protein, HLP, CTLA-1, CGL1, CTSG1, CSPB, Lymphocyte protease, T-cell serine protease 1-3E, Granzyme B, Granzyme-B, CTLA1, GRB, C11, Cytotoxic T-lymphocyte proteinase 2, SECT |
| Endotoxin level | Please contact with the lab for this information. |
| Accession | P10144 |
| Stability and Storage | Store at 4°C for 12 months. Protect from light. Do not freeze. |
| Note | For research use only. |

Data Image



Flow-cytometry

Flow-cytometry using FITC anti-Human GZMB antibody. BXP3 cells were stained with an irrelevant antibody (Green Histogram) or a FITC anti-Human GZMB antibody monoclonal antibody (Catalog # FHC79011 , Red Histogram) at a concentration of 5 µg/ml for 30 mins at RT. After washing, cells analysed on a NovoCyt Flow Cytometer.