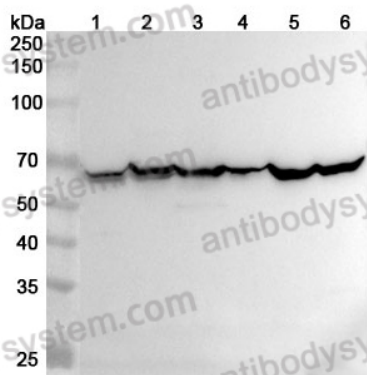


Anti-Human MCCC2 Polyclonal Antibody

Summary

Catalog No.	PHN54601
Host species	Rabbit
Species reactivity	Human
Immunogen	E. coli - derived recombinant Human MCCC2 (Lys80-Asn295).
Form	Liquid
Storage buffer	0.01M PBS, pH 7.4, 50% Glycerol, 0.05% Proclin 300.
Clonality	Polyclonal
Isotype	IgG
Applications	ELISA, IHC, WB
Target	3-methylcrotonyl-CoA carboxylase non-biotin-containing subunit, 3-methylcrotonyl-CoA:carbon dioxide ligase subunit beta, Methylcrotonoyl-CoA carboxylase beta chain, mitochondrial, MCCB, MCCC2, 3-methylcrotonyl-CoA carboxylase 2, MCCase subunit beta
Purification	Purified by antigen affinity column.
Accession	Q9HCC0
Stability and Storage	Use a manual defrost freezer and avoid repeated freeze thaw cycles. Store at 2 to 8°C for frequent use. Store at -20 to -80°C for twelve months from the date of receipt.
Note	For research use only.

Data Image



Western Blot

Various lysates were subjected to SDS PAGE followed by western blot with MCCC2 antibody (PHN54601) at 1 µg/ml.

Lane 1: Mouse brain lysate

Lane 2: Mouse liver lysate

Lane 3: Mouse kidney lysate

Lane 4: Rat brain lysate

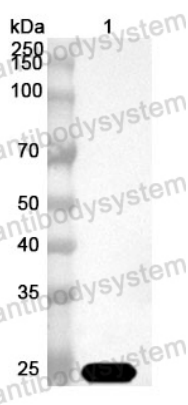
Lane 5: Rat liver lysate

Lane 6: Rat kidney lysate

Second Ab: Goat Anti-Rabbit IgG H&L Polyclonal antibody, HRP (PTB96431) at 0.1 µg/mL.

Predict MW: 61 kDa

Observed MW: 65 kDa



Western Blot

Recombinant Protein lysates were subjected to SDS PAGE followed by western blot with MCCC2 antibody (PHN54601) at 1 µg/ml.

Lane 1: Recombinant protein

Second Ab: Goat Anti-Rabbit IgG H&L Polyclonal antibody, HRP (PTB96431) at 0.1 µg/mL.

Predict MW: 26 kDa

Observed MW: 26 kDa