

# Anti-Rat ALPL Polyclonal Antibody

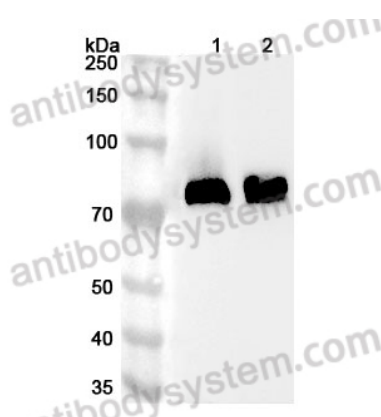
## Summary

---

<b>Catalog No.</b>	PRC15301
<b>Host species</b>	Rabbit
<b>Species reactivity</b>	Rat
<b>Immunogen</b>	E. coli - derived recombinant Rat ALPL (Lys52-Cys489).
<b>Form</b>	Liquid
<b>Storage buffer</b>	0.01M PBS, pH 7.4, 50% Glycerol, 0.05% Proclin 300.
<b>Clonality</b>	Polyclonal
<b>Isotype</b>	IgG
<b>Applications</b>	ELISA, IHC, WB
<b>Target</b>	Alkaline phosphatase, tissue-nonspecific isozyme, AP-TNAP, TNAP, TNSALP, 3.1.3.1, Alkaline phosphatase liver/bone/kidney isozyme, Phosphoamidase, Phosphocreatine phosphatase, 3.9.1.1, Alpl
<b>Purification</b>	Purified by antigen affinity column.
<b>Accession</b>	P08289
<b>Stability and Storage</b>	Use a manual defrost freezer and avoid repeated freeze thaw cycles. Store at 2 to 8°C for frequent use. Store at -20 to -80°C for twelve months from the date of receipt.
<b>Note</b>	For research use only.

## Data Image

---



Western Blot

Various lysates were subjected to SDS PAGE followed by western blot with ALPL antibody (PRC15301) at 1  $\mu$ g/ml.

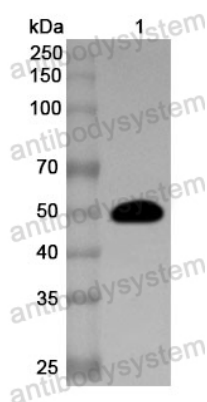
Lane 1: Mouse kidney lysate

Lane 2: Rat kidney lysate

Second Ab: Goat Anti-Rabbit IgG H&L Polyclonal antibody, HRP (PTB96431) at 0.1  $\mu$ g/mL.

Predict MW: 58 kDa

Observed MW: 80 kDa



Western Blot

Recombinant Protein lysates were subjected to SDS PAGE followed by western blot with ALPL antibody (PRC15301) at 1  $\mu$ g/ml.

Lane 1: Recombinant protein

Second Ab: Goat Anti-Rabbit IgG H&L Polyclonal antibody, HRP (PTB96431) at 0.1  $\mu$ g/mL.

Predict MW: 51 kDa

Observed MW: 51 kDa