

# Anti-Human SMOX Polyclonal Antibody

## Summary

---

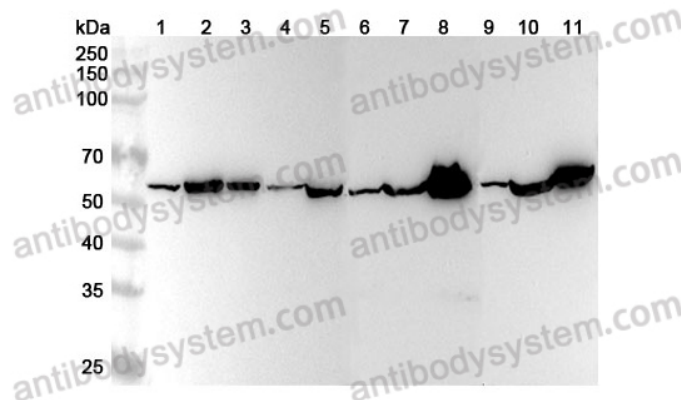
<b>Catalog No.</b>	PHJ67901
<b>Host species</b>	Rabbit
<b>Species reactivity</b>	Human
<b>Immunogen</b>	E. coli - derived recombinant Human SMOX (Met1-Gln165).
<b>Form</b>	Liquid
<b>Storage buffer</b>	0.01M PBS, pH 7.4, 50% Glycerol, 0.05% Proclin 300.
<b>Clonality</b>	Polyclonal
<b>Isotype</b>	IgG
<b>Applications</b>	ELISA, IHC, WB
<b>Target</b>	Spermine oxidase, PAO-1, PAOh1, C20orf16, SMOX, SMO, Polyamine oxidase 1
<b>Purification</b>	Purified by antigen affinity column.
<b>Accession</b>	Q9NWM0
<b>Stability and Storage</b>	Use a manual defrost freezer and avoid repeated freeze thaw cycles. Store at 2 to 8°C for frequent use. Store at -20 to -80°C for twelve months from the date of receipt.
<b>Note</b>	For research use only.

## Data Image

---

Various lysates were subjected to SDS PAGE followed by western blot with SMOX antibody (PHJ67901) at 1 µg/ml.

Lane 1: A549 cell lysate  
 Lane 2: MCF-7 cell lysate  
 Lane 3: PC-3 cell lysate  
 Lane 4: 293T cell lysate  
 Lane 5: C2C12 cell lysate  
 Lane 6: Mouse testis lysate  
 Lane 7: Mouse liver lysate  
 Lane 8: Mouse pancears lysate  
 Lane 9: Rat testis lysate  
 Lane 10: Rat liver lysate  
 Lane 11: Rat pancears lysate



Western Blot

Second Ab: Goat Anti-Rabbit IgG H&L Polyclonal antibody, HRP (PTB96431) at 0.1 µg/mL.

Predict MW: 56 kDa

Observed MW: 56 kDa

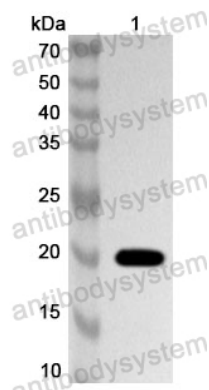
Recombinant Protein lysates were subjected to SDS PAGE followed by western blot with SMOX antibody (PHJ67901) at 1 µg/ml.

Lane 1: Recombinant protein

Second Ab: Goat Anti-Rabbit IgG H&L Polyclonal antibody, HRP (PTB96431) at 0.1 µg/mL.

Predict MW: 20 kDa

Observed MW: 20 kDa



Western Blot