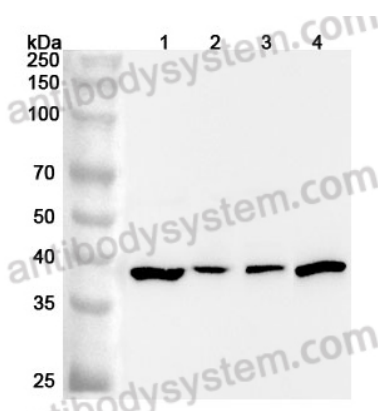


Anti-Human SAE1 Polyclonal Antibody

Summary

Catalog No.	PHN34801
Host species	Rabbit
Species reactivity	Human
Immunogen	E. coli - derived recombinant Human SAE1 (Met1-Lys346).
Form	Liquid
Storage buffer	0.01M PBS, pH 7.4, 50% Glycerol, 0.05% Proclin 300.
Clonality	Polyclonal
Isotype	IgG
Applications	ELISA, IHC, WB
Target	SAE1, AOS1, Ubiquitin-like 1-activating enzyme E1A, SUA1, SUMO-activating enzyme subunit 1, UBLE1A
Purification	Purified by antigen affinity column.
Accession	Q9UBE0
Stability and Storage	Use a manual defrost freezer and avoid repeated freeze thaw cycles. Store at 2 to 8°C for frequent use. Store at -20 to -80°C for twelve months from the date of receipt.
Note	For research use only.

Data Image



Western Blot

Various lysates were subjected to SDS PAGE followed by western blot with SAE1 antibody (PHN34801) at 1 μ g/ml.

Lane 1: Jurkat cell lysate

Lane 2: MCF-7 cell lysate

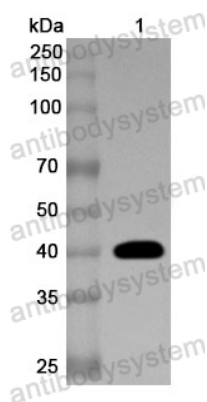
Lane 3: NIH3T3 cell lysate

Lane 4: HT-29 cell lysate

Second Ab: Goat Anti-Rabbit IgG H&L Polyclonal antibody, HRP (PTB96431) at 0.1 μ g/mL.

Predict MW: 38 kDa

Observed MW: 38 kDa



Western Blot

Recombinant Protein lysates were subjected to SDS PAGE followed by western blot with SAE1 antibody (PHN34801) at 1 μ g/ml.

Lane 1: Recombinant protein

Second Ab: Goat Anti-Rabbit IgG H&L Polyclonal antibody, HRP (PTB96431) at 0.1 μ g/mL.

Predict MW: 41 kDa

Observed MW: 41 kDa