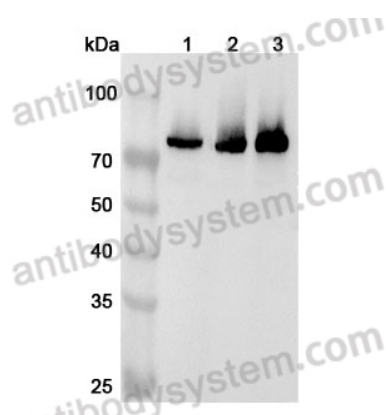


Anti-Human METTL3 Polyclonal Antibody

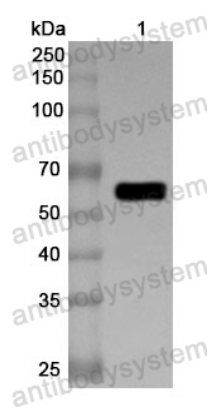
Summary

Catalog No.	PHJ15401
Host species	Rabbit
Species reactivity	Human
Immunogen	E. coli - derived recombinant Human METTL3 (Met1-Leu580).
Form	Liquid
Storage buffer	0.01M PBS, pH 7.4, 50% Glycerol, 0.05% Proclin 300.
Clonality	Polyclonal
Isotype	IgG
Applications	ELISA, IHC, WB
Target	METTL3, N6-adenosine-methyltransferase 70 kDa subunit, N6-adenosine-methyltransferase catalytic subunit, MTA70, Methyltransferase-like protein 3, MT-A70, hMETTL3
Purification	Purified by antigen affinity column.
Accession	Q86U44
Stability and Storage	Use a manual defrost freezer and avoid repeated freeze thaw cycles. Store at 2 to 8°C for frequent use. Store at -20 to -80°C for twelve months from the date of receipt.
Note	For research use only.

Data Image



Western Blot



Western Blot

Various lysates were subjected to SDS PAGE followed by western blot with METTL3 antibody (PHJ15401) at 1 μ g/ml.

Lane 1: Hela cell lysate

Lane 2: Jurkat cell lysate

Lane 3: K562 cell lysate

Second Ab: Goat Anti-Rabbit IgG H&L Polyclonal antibody, HRP (PTB96431) at 0.1 μ g/mL.

Predict MW: 64 kDa

Observed MW: 72 kDa

Recombinant Protein lysates were subjected to SDS PAGE followed by western blot with METTL3 antibody (PHJ15401) at 1 μ g/ml.

Lane 1: Recombinant protein

Second Ab: Goat Anti-Rabbit IgG H&L Polyclonal antibody, HRP (PTB96431) at 0.1 μ g/mL.

Predict MW: 67 kDa

Observed MW: 67 kDa