

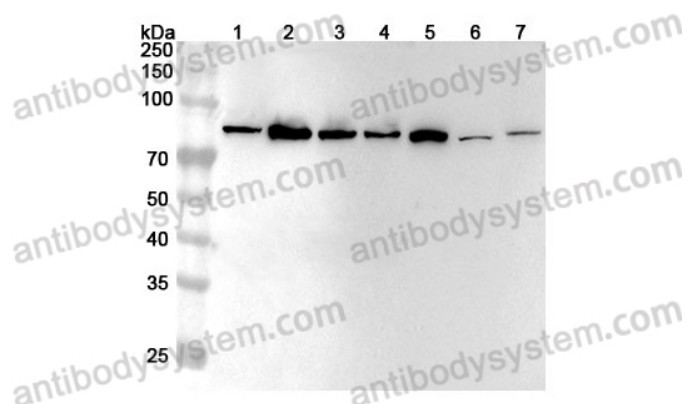
Anti-Human SEMA3A Polyclonal Antibody

Summary

Catalog No.	PHG82801
Host species	Rabbit
Species reactivity	Human
Immunogen	E. coli - derived recombinant Human SEMA3A (Lys26-His276).
Form	Liquid
Storage buffer	0.01M PBS, pH 7.4, 50% Glycerol, 0.05% Proclin 300.
Clonality	Polyclonal
Isotype	IgG
Applications	ELISA, IHC, WB
Target	Semaphorin III, Sema III, SEMA3A, Semaphorin-3A, SEMAD
Purification	Purified by antigen affinity column.
Accession	Q14563
Stability and Storage	Use a manual defrost freezer and avoid repeated freeze thaw cycles. Store at 2 to 8°C for frequent use. Store at -20 to -80°C for twelve months from the date of receipt.
Note	For research use only.

Data Image

Various lysates were subjected to SDS PAGE followed by western blot with SEMA3A antibody (PHG82801) at 1 µg/ml.



Western Blot

Lane 1: C2C12 cell lysate

Lane 2: A549 cell lysate

Lane 3: HT-29 cell lysate

Lane 4: Raji cell lysate

Lane 5: Mouse spleen lysate

Lane 6: Mouse skeletal muscle lysate

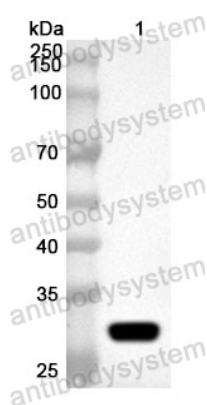
Lane 7: Rat spleen lysate

Second Ab: Goat Anti-Rabbit IgG H&L Polyclonal antibody, HRP (PTB96431) at 0.1 µg/mL.

Predict MW: 89 kDa

Observed MW: 89 kDa

Recombinant Protein lysates were subjected to SDS PAGE followed by western blot with SEMA3A antibody (PHG82801) at 1 µg/ml.



Western Blot

Lane 1: Recombinant protein

Second Ab: Goat Anti-Rabbit IgG H&L Polyclonal antibody, HRP (PTB96431) at 0.1 µg/mL.

Predict MW: 31 kDa

Observed MW: 31 kDa