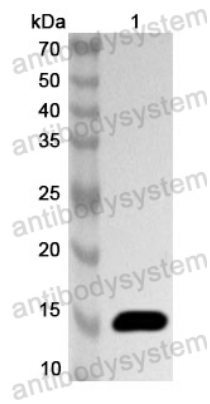


Anti-HIV-2 env/Env polyprotein/gp36 Polyclonal Antibody

Summary

Catalog No.	PVV03201
Host species	Rabbit
Species reactivity	Human immunodeficiency virus 2 (HIV-2)
Immunogen	E. coli - derived recombinant HIV-2 env/Env polyprotein/gp36 (Gln547-Tyr670).
Form	Liquid
Storage buffer	0.01M PBS, pH 7.4, 50% Glycerol, 0.05% Proclin 300.
Clonality	Polyclonal
Isotype	IgG
Applications	ELISA, WB
Target	Envelope glycoprotein gp160, Surface protein gp120, SU, Glycoprotein 120, gp120, Transmembrane protein gp41, TM, env
Purification	Purified by antigen affinity column.
Accession	L8B302
Stability and Storage	Use a manual defrost freezer and avoid repeated freeze thaw cycles. Store at 2 to 8°C for frequent use. Store at -20 to -80°C for twelve months from the date of receipt.
Note	For research use only.

Data Image



Western Blot

Recombinant Protein lysates were subjected to SDS PAGE followed by western blot with env/Env polyprotein/gp36 antibody (PVV03201) at 1 $\mu\text{g/ml}$.

Lane 1: Recombinant protein

Second Ab: Goat Anti-Rabbit IgG H&L Polyclonal antibody, HRP (PTB96431) at 0.1 $\mu\text{g/mL}$.

Predict MW: 15 kDa

Observed MW: 15 kDa