

# Anti-Human TAF1 Polyclonal Antibody

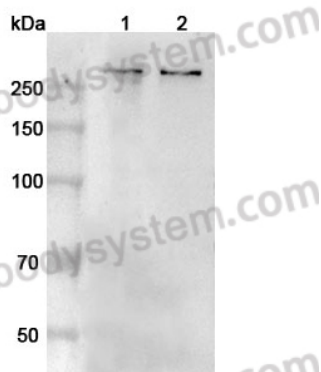
## Summary

---

<b>Catalog No.</b>	PHD46801
<b>Host species</b>	Rabbit
<b>Species reactivity</b>	Human
<b>Immunogen</b>	E. coli - derived recombinant Human TAF1 (Ser635-Gly944).
<b>Form</b>	Liquid
<b>Storage buffer</b>	0.01M PBS, pH 7.4, 50% Glycerol, 0.05% Proclin 300.
<b>Clonality</b>	Polyclonal
<b>Isotype</b>	IgG
<b>Applications</b>	ELISA, IHC, WB
<b>Target</b>	p250, TAF(II)250, CCGS, BA2R, TAF1, Transcription initiation factor TFIID subunit 1, Cell cycle gene 1 protein, TAFII-250, TAF2A, CCG1, TBP-associated factor 250 kDa, Transcription initiation factor TFIID 250 kDa subunit, TAFII250
<b>Purification</b>	Purified by antigen affinity column.
<b>Accession</b>	P21675
<b>Stability and Storage</b>	Use a manual defrost freezer and avoid repeated freeze thaw cycles. Store at 2 to 8°C for frequent use. Store at -20 to -80°C for twelve months from the date of receipt.
<b>Note</b>	For research use only.

## Data Image

---



Western Blot

Various lysates were subjected to SDS PAGE followed by western blot with TAF1 antibody (PHD46801) at 1  $\mu$ g/ml.

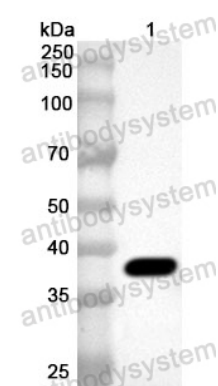
Lane 1: 293T cell lysate

Lane 2: Jurkat cell lysate

Second Ab: Goat Anti-Rabbit IgG H&L Polyclonal antibody, HRP (PTB96431) at 0.1  $\mu$ g/mL.

Predict MW: 219 kDa

Observed MW: 260 kDa



Western Blot

Recombinant Protein lysates were subjected to SDS PAGE followed by western blot with TAF1 antibody (PHD46801) at 1  $\mu$ g/ml.

Lane 1: Recombinant protein

Second Ab: Goat Anti-Rabbit IgG H&L Polyclonal antibody, HRP (PTB96431) at 0.1  $\mu$ g/mL.

Predict MW: 38 kDa

Observed MW: 38 kDa