

# Anti-Human CASP3/Caspase-3 Polyclonal Antibody

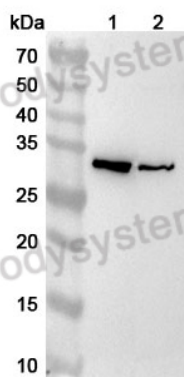
## Summary

---

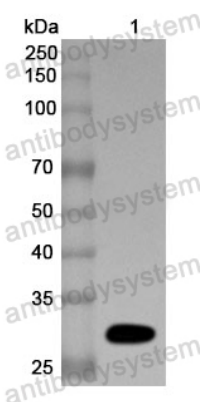
<b>Catalog No.</b>	PHE35901
<b>Host species</b>	Rabbit
<b>Species reactivity</b>	Human
<b>Immunogen</b>	E. coli - derived recombinant Human CASP3/Caspase-3 (Ser29-His277).
<b>Form</b>	Liquid
<b>Storage buffer</b>	0.01M PBS, pH 7.4, 50% Glycerol, 0.05% Proclin 300.
<b>Clonality</b>	Polyclonal
<b>Isotype</b>	IgG
<b>Applications</b>	ELISA, IHC, WB
<b>Target</b>	Caspase-3, CPP-32, CPP32, CASP-3, SREBP cleavage activity 1, CASP3, Apopain, SCA-1, Cysteine protease CPP32, Protein Yama
<b>Purification</b>	Purified by antigen affinity column.
<b>Accession</b>	P42574
<b>Stability and Storage</b>	Use a manual defrost freezer and avoid repeated freeze thaw cycles. Store at 2 to 8°C for frequent use. Store at -20 to -80°C for twelve months from the date of receipt.
<b>Note</b>	For research use only.

## Data Image

---



Western Blot



Western Blot

Various lysates were subjected to SDS PAGE followed by western blot with CASP3 antibody (PHE35901) at 1  $\mu$ g/ml.

Lane 1: Jurkat cell lysate

Lane 2: HeLa cell lysate

Second Ab: Goat Anti-Rabbit IgG H&L Polyclonal antibody, HRP (PTB96431) at 0.1  $\mu$ g/mL.

Predict MW: 32 kDa

Observed MW: 32 kDa

Recombinant Protein lysates were subjected to SDS PAGE followed by western blot with CASP3/Caspase-3 antibody (PHE35901) at 1  $\mu$ g/ml.

Lane 1: Recombinant protein

Second Ab: Goat Anti-Rabbit IgG H&L Polyclonal antibody, HRP (PTB96431) at 0.1  $\mu$ g/mL.

Predict MW: 31 kDa

Observed MW: 31 kDa