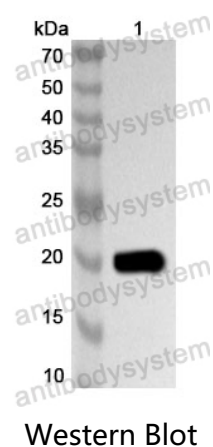


Anti-HAdV-7 Shutoff protein/L4 Polyclonal Antibody

Summary

| | |
|------------------------------|---|
| Catalog No. | PVV40101 |
| Host species | Rabbit |
| Species reactivity | Human adenovirus B serotype 7 (HAdV-7) (Human adenovirus 7) |
| Immunogen | E. coli - derived recombinant HAdV-7 Shutoff protein/L4 (Leu373-Arg537). |
| Form | Liquid |
| Storage buffer | 0.01M PBS, pH 7.4, 50% Glycerol, 0.05% Proclin 300. |
| Clonality | Polyclonal |
| Isotype | IgG |
| Applications | ELISA, WB |
| Target | Shutoff protein, 100 kDa protein, p100K, 100K-chaperone protein, L4-100K, Shutoff protein 100K, L4 |
| Purification | Purified by antigen affinity column. |
| Accession | Q5EY60 |
| Stability and Storage | Use a manual defrost freezer and avoid repeated freeze thaw cycles. Store at 2 to 8°C for frequent use. Store at -20 to -80°C for twelve months from the date of receipt. |
| Note | For research use only. |

Data Image



Recombinant Protein lysates were subjected to SDS PAGE followed by western blot with Shutoff protein/L4 antibody (PVV40101) at 1 µg/ml.

Lane 1: Recombinant Protein

Second Ab: Goat Anti-Rabbit IgG H&L Polyclonal antibody, HRP (PTB96431) at 0.1 µg/mL.

Predict MW: 21 kDa

Observed MW: 21 kDa